

**Bangi District**  
Takhar Province  
AFGHANISTAN

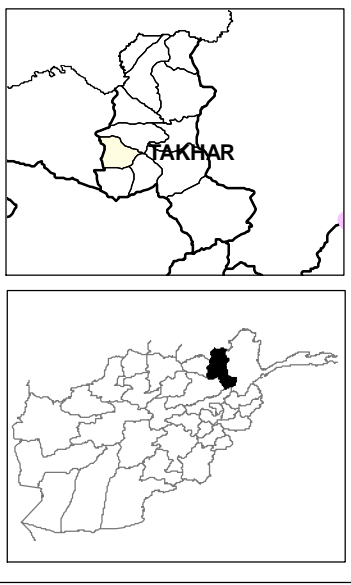


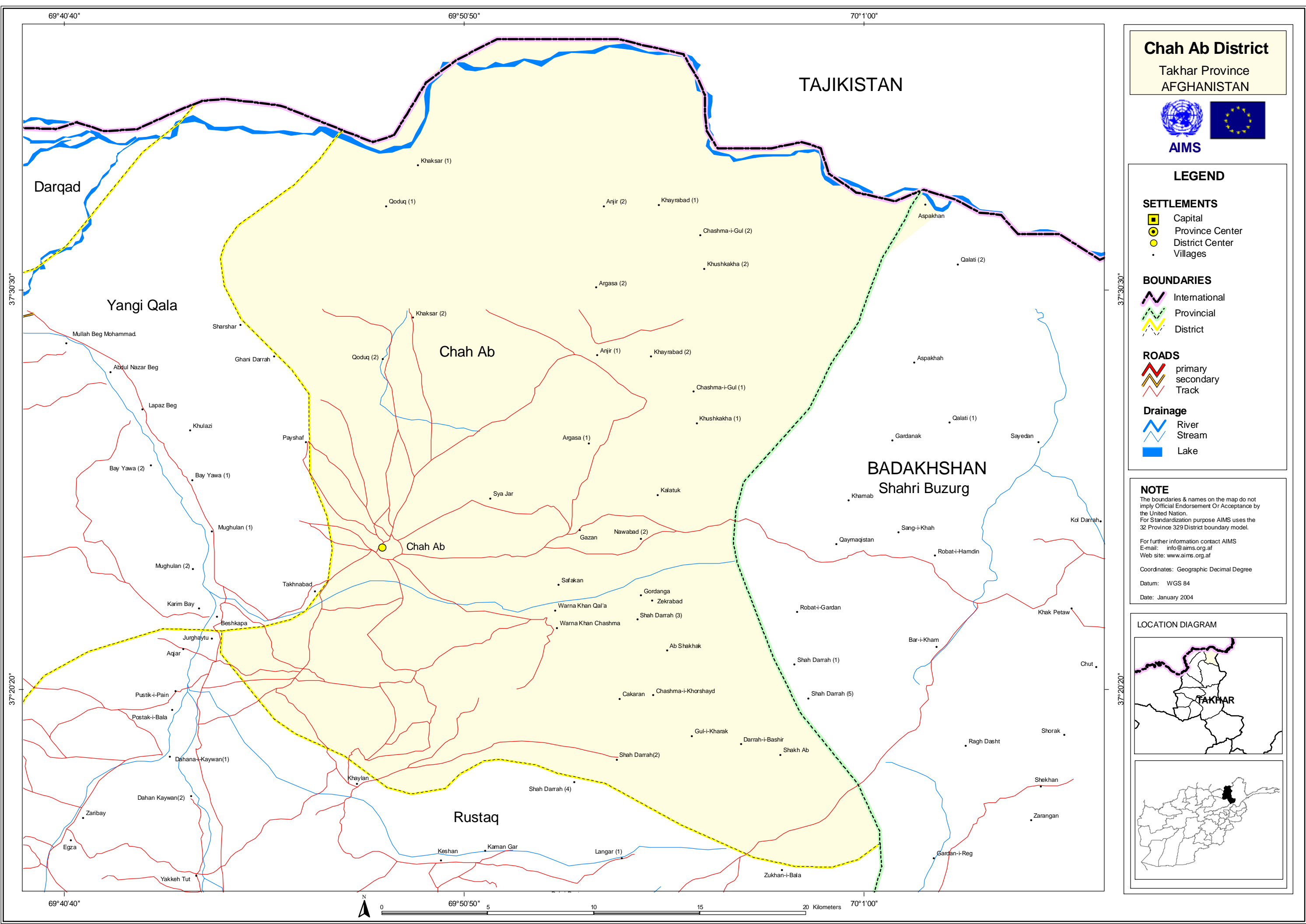
**LEGEND**

- SETTLEMENTS**
- Capital
  - Province Center
  - District Center
  - Villages
- BOUNDARIES**
- International
  - Provincial
  - District
- ROADS**
- primary
  - secondary
  - Track
- Drainage**
- River
  - Stream
  - Lake

**NOTE**  
The boundaries & names on the map do not imply Official Endorsement Or Acceptance by the United Nation.  
For Standardization purpose AIMS uses the 32 Province 329 District boundary model.  
For further information contact AIMS  
E-mail: [info@aims.org.af](mailto:info@aims.org.af)  
Web site: [www.aims.org.af](http://www.aims.org.af)  
Coordinates: Geographic Decimal Degree  
Datum: WGS 84  
Date: January 2004

**LOCATION DIAGRAM**





### Chah Ab District

Takhar Province  
AFGHANISTAN



#### LEGEND

**SETTLEMENTS**

- Capital (Yellow square)
- Province Center (Yellow circle)
- District Center (Yellow circle)
- Villages (Black dot)

**BOUNDARIES**

- International (Dashed black line)
- Provincial (Dashed green line)
- District (Dashed yellow line)

**ROADS**

- primary (Red line)
- secondary (Yellow line)
- Track (Pink line)

**Drainage**

- River (Blue line)
- Stream (Light blue line)
- Lake (Blue area)

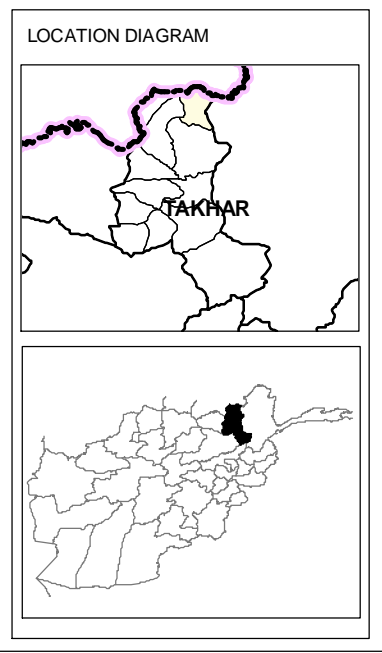
**NOTE**

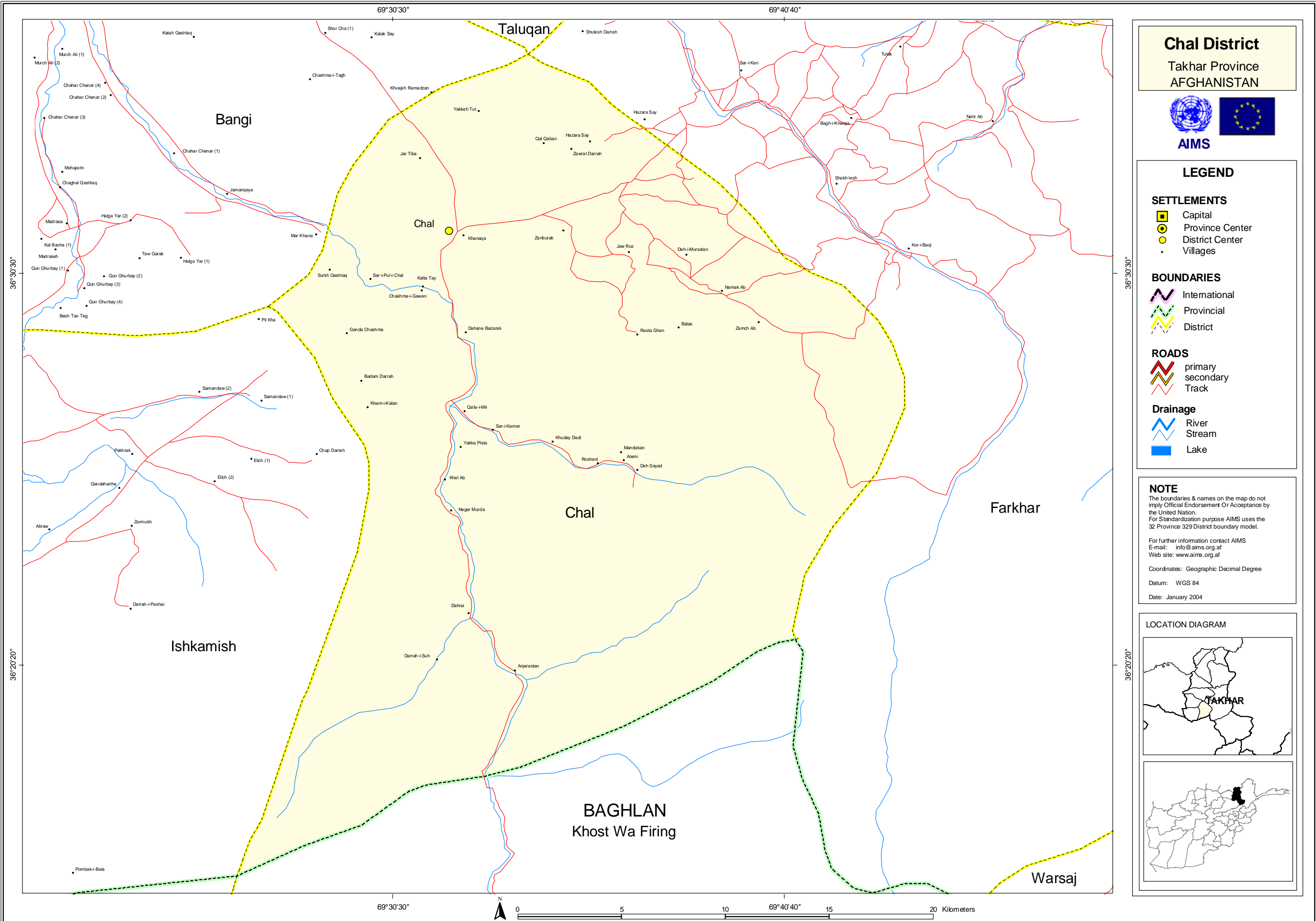
The boundaries & names on the map do not imply Official Endorsement Or Acceptance by the United Nation.

For Standardization purpose AIMS uses the 32 Province 329 District boundary model.

For further information contact AIMS  
E-mail: [info@aims.org.af](mailto:info@aims.org.af)  
Web site: [www.aims.org.af](http://www.aims.org.af)

Coordinates: Geographic Decimal Degree  
Datum: WGS 84  
Date: January 2004





# Chal District

Takhar Province  
AFGHANISTAN



## LEGEND

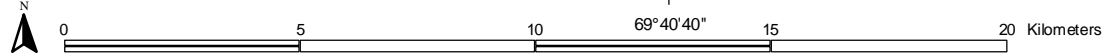
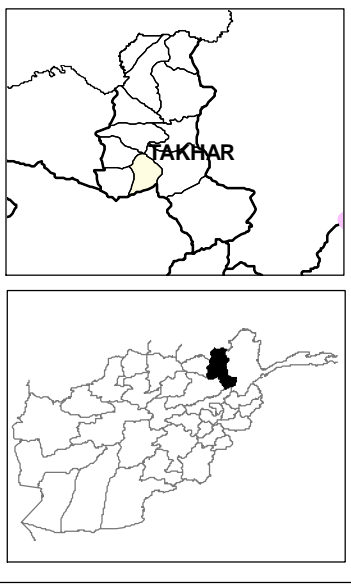
- SETTLEMENTS**
- Capital
  - Province Center
  - District Center
  - Villages
- BOUNDARIES**
- International
  - Provincial
  - District
- ROADS**
- primary
  - secondary
  - Track
- Drainage**
- River
  - Stream
  - Lake

**NOTE**  
The boundaries & names on the map do not imply Official Endorsement Or Acceptance by the United Nation.  
For Standardization purpose AIMS uses the 32 Province 329 District boundary model.

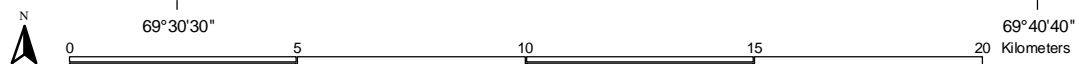
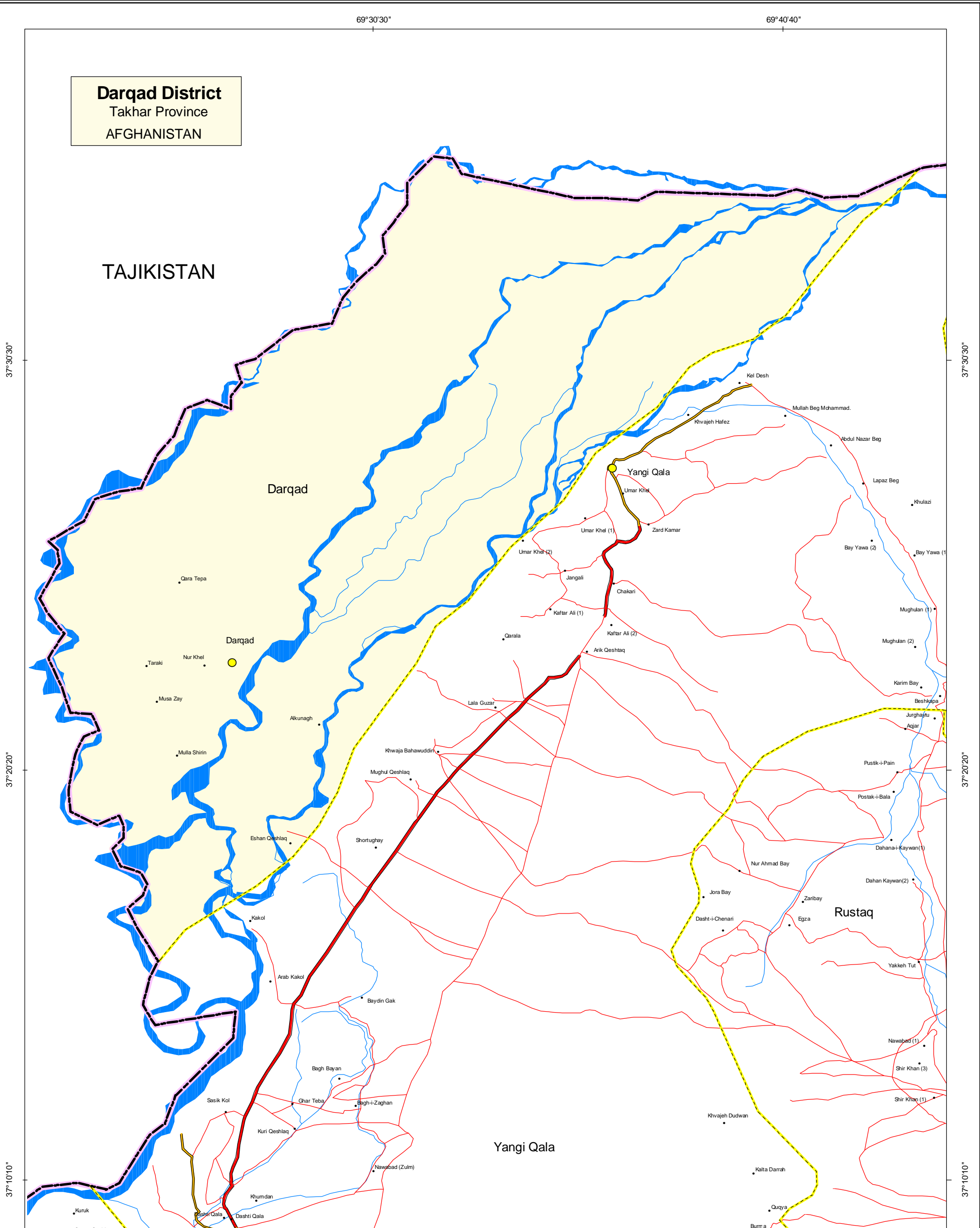
For further information contact AIMS  
E-mail: [info@aims.org.af](mailto:info@aims.org.af)  
Web site: [www.aims.org.af](http://www.aims.org.af)

Coordinates: Geographic Decimal Degree  
Datum: WGS 84  
Date: January 2004

### LOCATION DIAGRAM



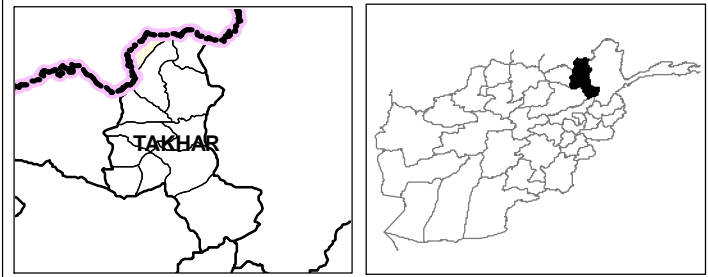
**Darqad District**  
Takhar Province  
AFGHANISTAN



**NOTE**

The boundaries & names on the map do not imply Official Endorsement Or Acceptance by the United Nation.  
For Standardization purpose AIMS uses the 32 Province 329 District boundary model.  
For further information contact AIMS  
E-mail: [info@aims.org.af](mailto:info@aims.org.af)  
Web site: [www.aims.org.af](http://www.aims.org.af)  
Coordinates: Geographic Decimal Degree  
Datum: WGS 84  
Date: January 2004

**LOCATION DIAGRAM**

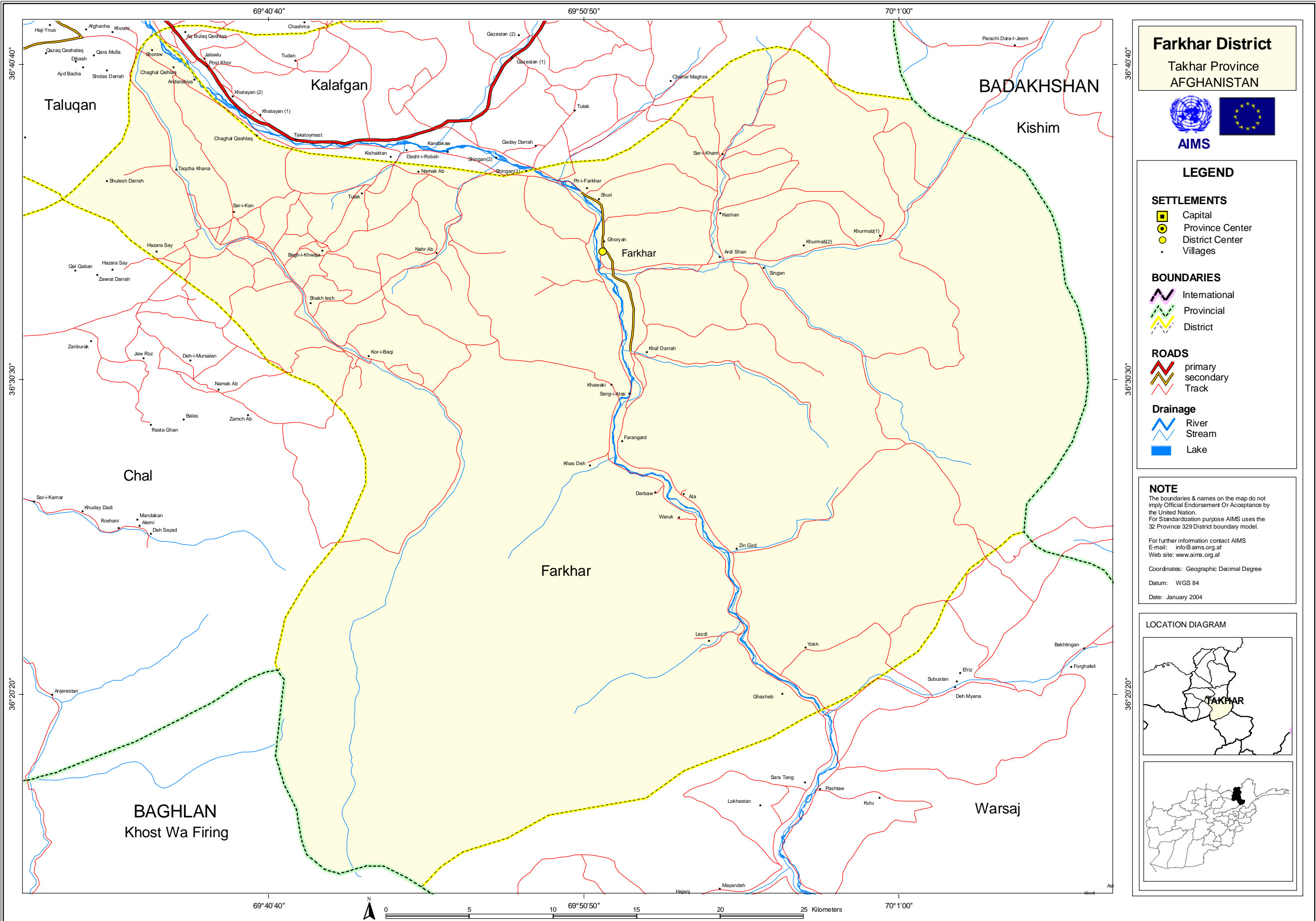


**LEGEND**

SETTLEMENTS	BOUNDARIES	ROADS	Drainage
<ul style="list-style-type: none"> <li>Capital</li> <li>Province Center</li> <li>District Center</li> <li>Villages</li> </ul>	<ul style="list-style-type: none"> <li>International</li> <li>Provincial</li> <li>District</li> </ul>	<ul style="list-style-type: none"> <li>primary</li> <li>secondary</li> <li>Track</li> </ul>	<ul style="list-style-type: none"> <li>River</li> <li>Stream</li> <li>Lake</li> </ul>







**Farkhar District**  
Takhar Province  
AFGHANISTAN



**LEGEND**

**SETTLEMENTS**

- Capital
- Province Center
- District Center
- Villages

**BOUNDARIES**

- International
- Provincial
- District

**ROADS**

- primary
- secondary
- Track

**Drainage**

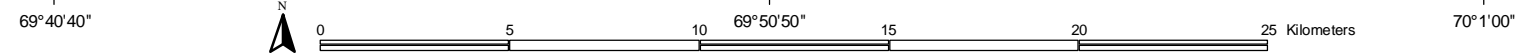
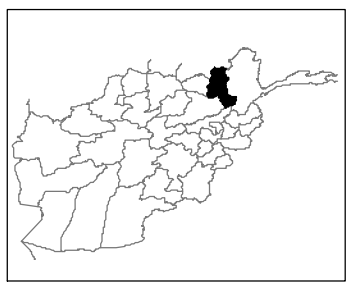
- River
- Stream
- Lake

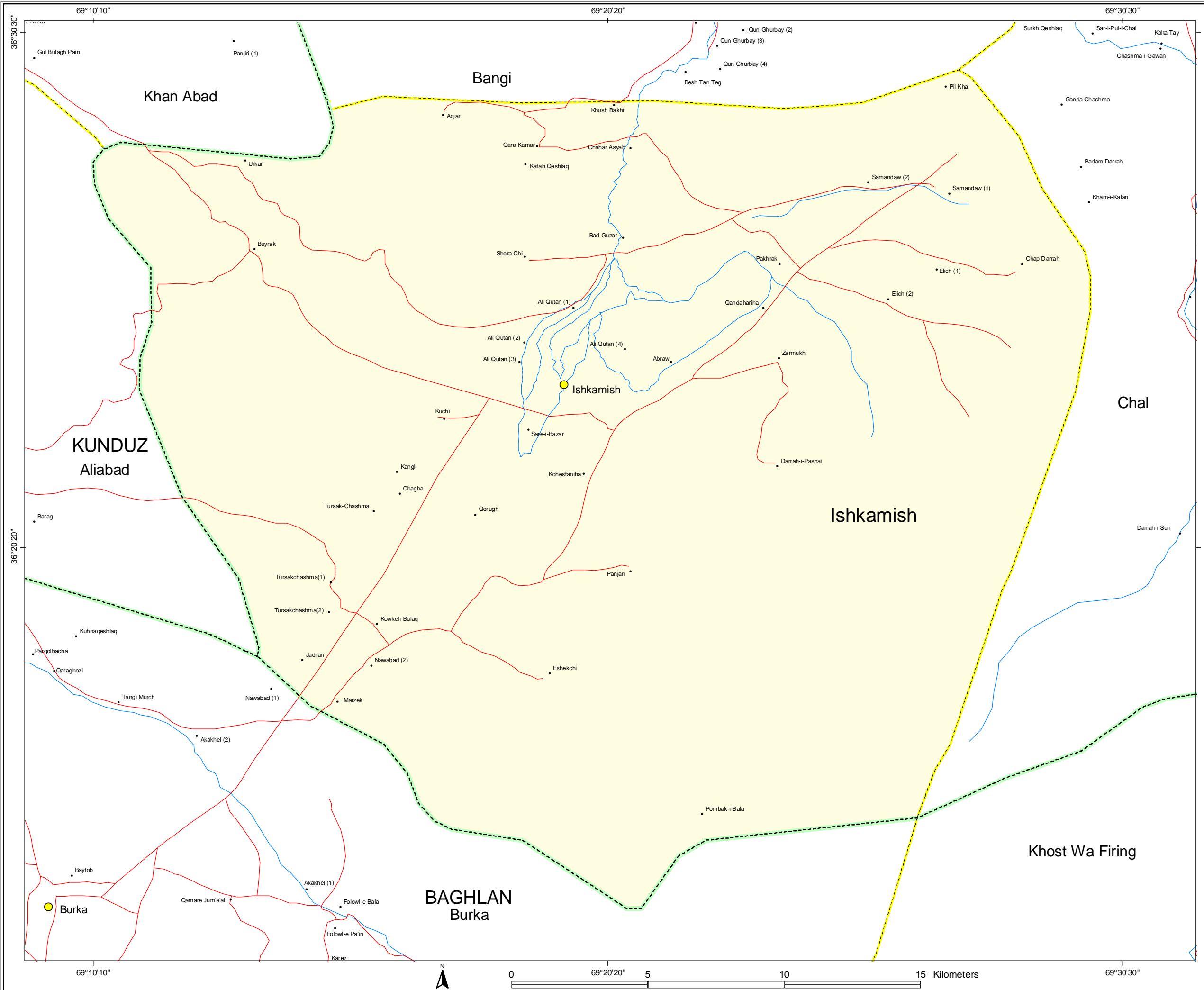
**NOTE**

The boundaries & names on the map do not imply Official Endorsement Or Acceptance by the United Nation.  
For Standardization purpose AIMS uses the 32 Province 329 District boundary model.  
For further information contact AIMS  
E-mail: [info@aims.org.af](mailto:info@aims.org.af)  
Web site: [www.aims.org.af](http://www.aims.org.af)

Coordinates: Geographic Decimal Degree  
Datum: WGS 84  
Date: January 2004

**LOCATION DIAGRAM**





**Ishkamish District**  
Takhar Province  
AFGHANISTAN

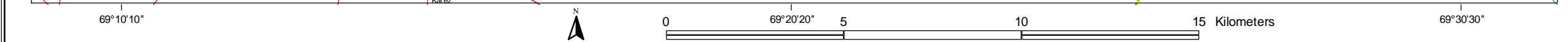
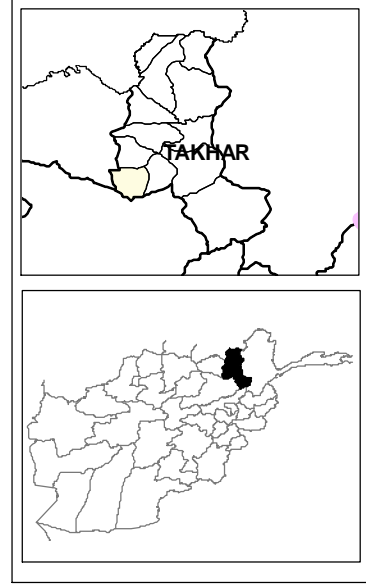


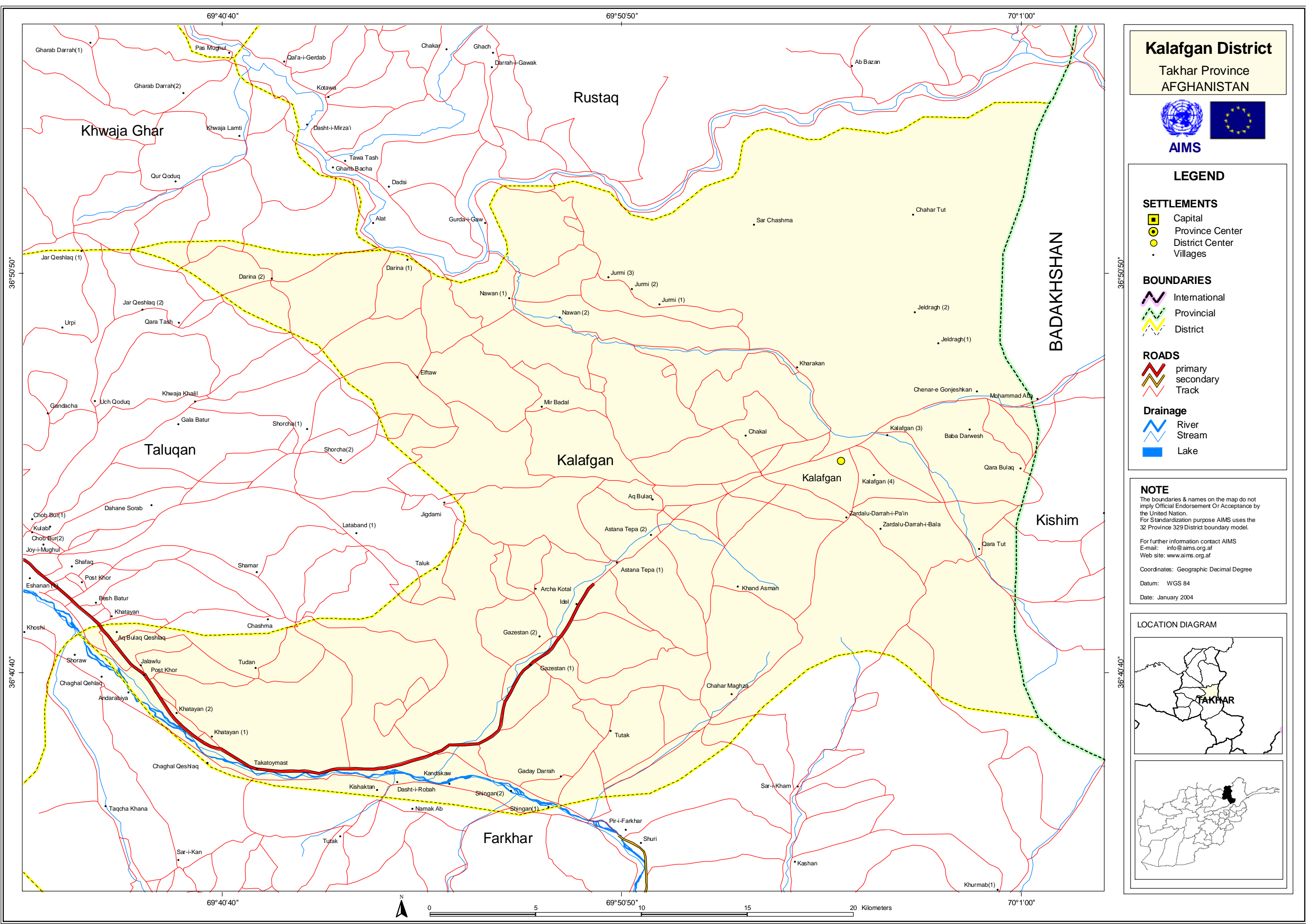
**LEGEND**

- SETTLEMENTS**
- Capital
  - Province Center
  - District Center
  - Villages
- BOUNDARIES**
- International
  - Provincial
  - District
- ROADS**
- primary
  - secondary
  - Track
- Drainage**
- River
  - Stream
  - Lake

**NOTE**  
The boundaries & names on the map do not imply Official Endorsement Or Acceptance by the United Nation.  
For Standardization purpose AIMS uses the 32 Province 329 District boundary model.  
For further information contact AIMS  
E-mail: [info@aims.org.af](mailto:info@aims.org.af)  
Web site: [www.aims.org.af](http://www.aims.org.af)  
Coordinates: Geographic Decimal Degree  
Datum: WGS 84  
Date: January 2004

**LOCATION DIAGRAM**





# Kalafgan District

Takhar Province  
AFGHANISTAN



### LEGEND

**SETTLEMENTS**

- Capital
- Province Center
- District Center
- Villages

**BOUNDARIES**

- International
- Provincial
- District

**ROADS**

- primary
- secondary
- Track

**Drainage**

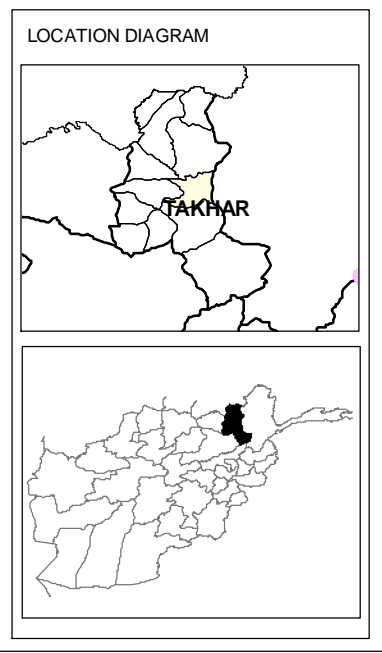
- River
- Stream
- Lake

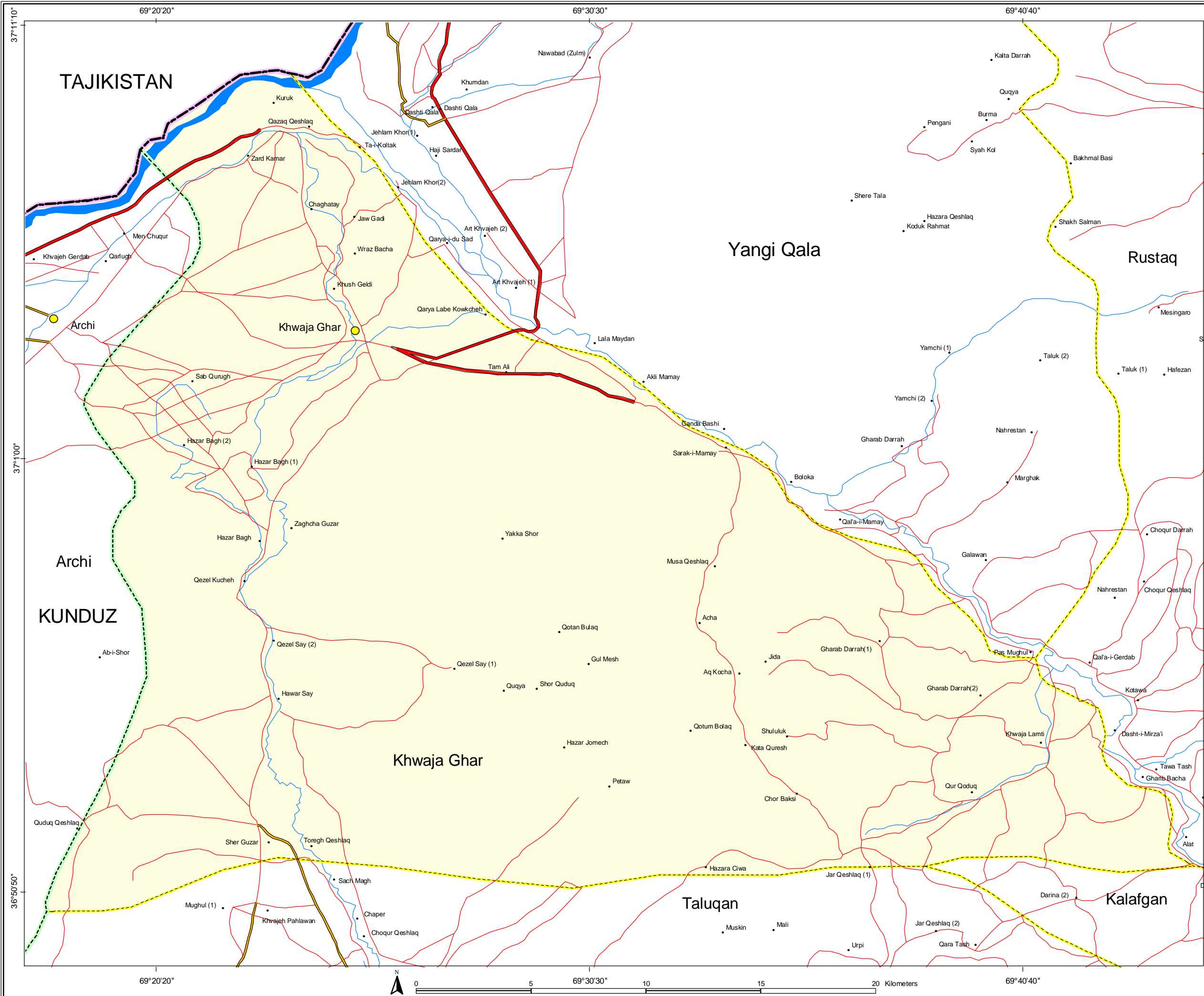
**NOTE**

The boundaries & names on the map do not imply Official Endorsement Or Acceptance by the United Nation.  
 For Standardization purpose AIMS uses the 32 Province 329 District boundary model.

For further information contact AIMS  
 E-mail: [info@aims.org.af](mailto:info@aims.org.af)  
 Web site: [www.aims.org.af](http://www.aims.org.af)

Coordinates: Geographic Decimal Degree  
 Datum: WGS 84  
 Date: January 2004





**Khwaja Ghar District**  
Takhar Province  
AFGHANISTAN



**LEGEND**

**SETTLEMENTS**

- Capital (Yellow square)
- Province Center (Yellow circle)
- District Center (Yellow circle)
- Villages (Black dot)

**BOUNDARIES**

- International (Dashed purple line)
- Provincial (Dashed green line)
- District (Dashed yellow line)

**ROADS**

- primary (Red line)
- secondary (Yellow line)
- Track (Pink line)

**Drainage**

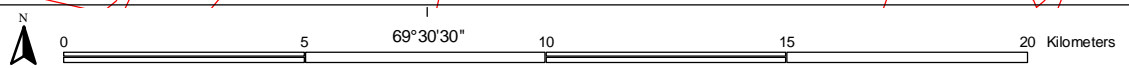
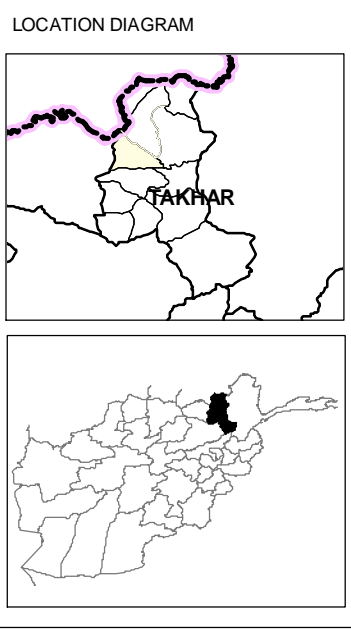
- River (Blue line)
- Stream (Light blue line)
- Lake (Blue area)

**NOTE**

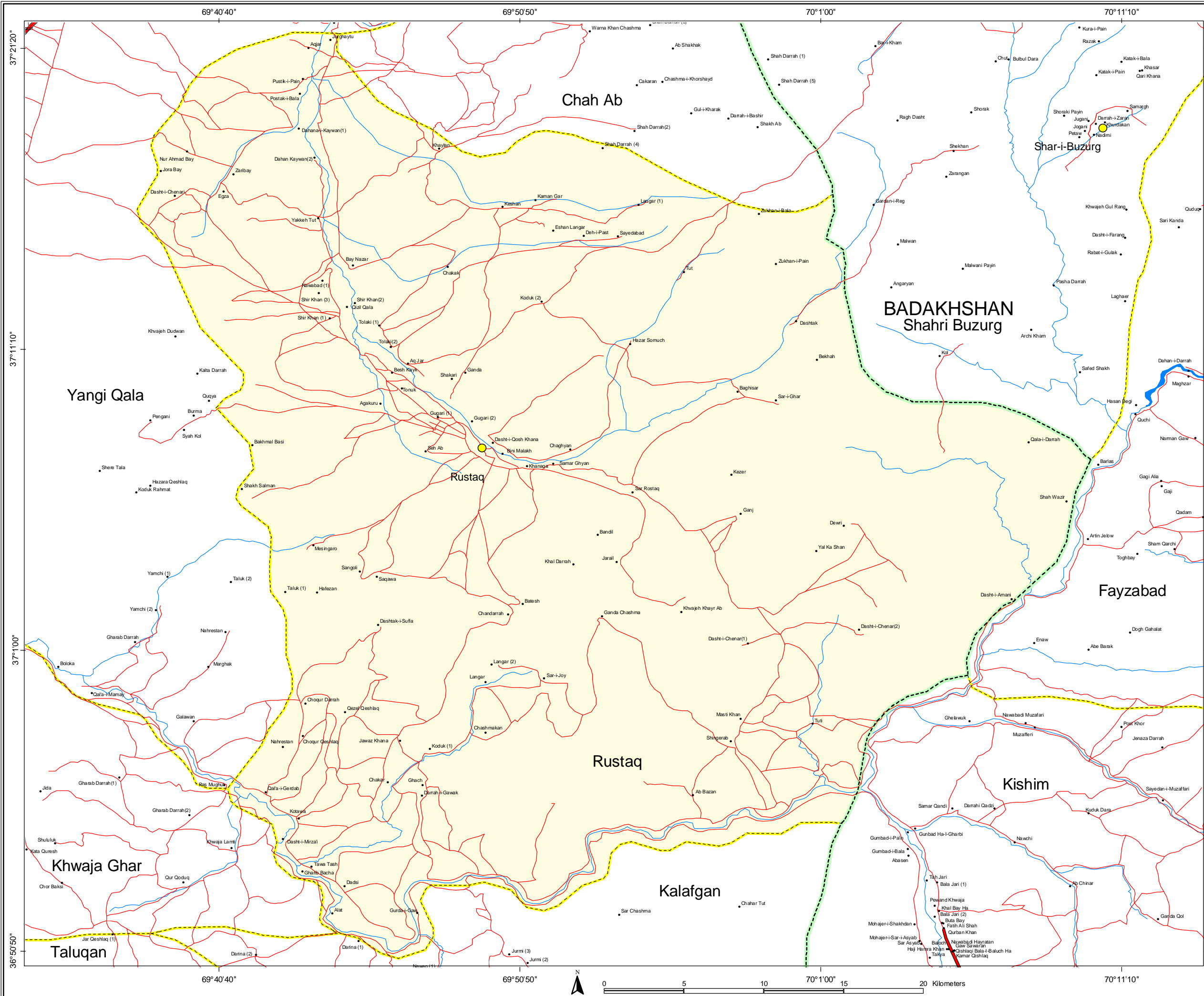
The boundaries & names on the map do not imply Official Endorsement Or Acceptance by the United Nation.  
For Standardization purpose AIMS uses the 32 Province 329 District boundary model.

For further information contact AIMS  
E-mail: [info@aims.org.af](mailto:info@aims.org.af)  
Web site: [www.aims.org.af](http://www.aims.org.af)

Coordinates: Geographic Decimal Degree  
Datum: WGS 84  
Date: January 2004







# Rustaq District

Takhar Province  
AFGHANISTAN



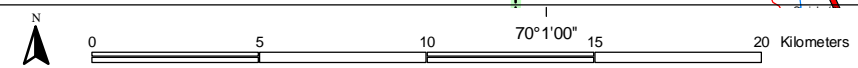
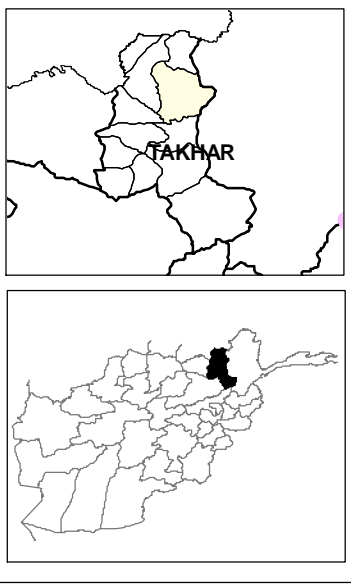
## LEGEND

- SETTLEMENTS**
- Capital
  - Province Center
  - District Center
  - Villages
- BOUNDARIES**
- International
  - Provincial
  - District
- ROADS**
- primary
  - secondary
  - Track
- Drainage**
- River
  - Stream
  - Lake

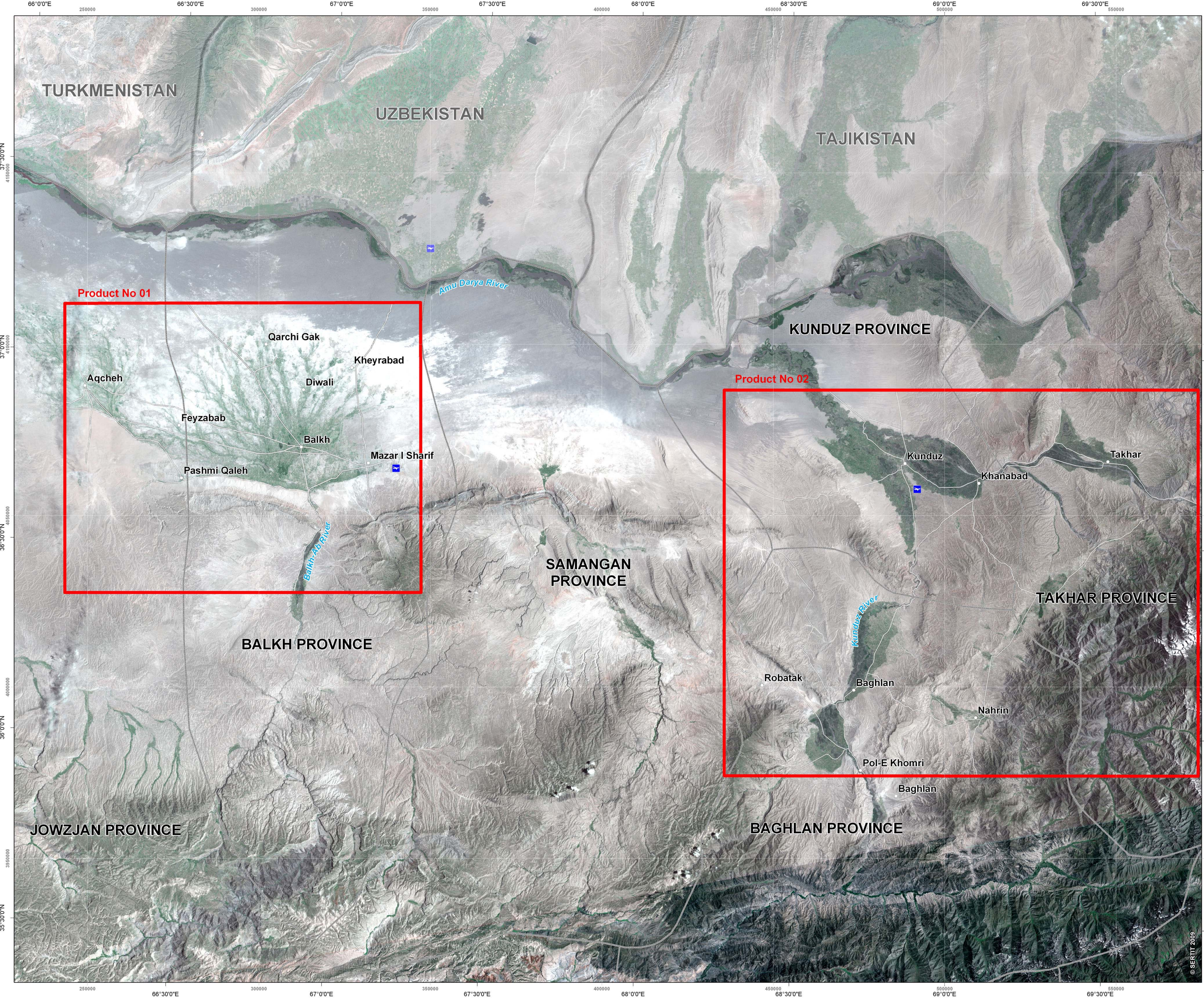
**NOTE**  
The boundaries & names on the map do not imply Official Endorsement Or Acceptance by the United Nation.  
For standardization purpose AIMS uses the 32 Province 329 District boundary model.  
For further information contact AIMS  
E-mail: [info@aims.org.af](mailto:info@aims.org.af)  
Web site: [www.aims.org.af](http://www.aims.org.af)

Coordinates: Geographic Decimal Degree  
Datum: WGS 84  
Date: January 2004

## LOCATION DIAGRAM







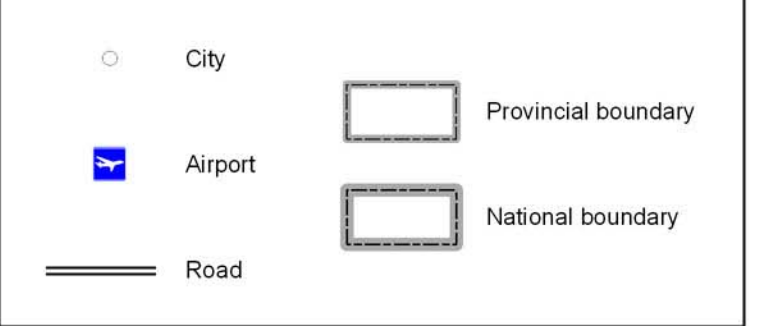
# AFGHANISTAN Balkh, Kunduz, Takhar and Baghlan areas

Reference space-map  
Scale: 1:500,000

Location Diagrams



Legend



Interpretation

This product represents a reference space-map covering the region of Balkh, Kunduz, Baghlan and Takhar. The area has been hit in the end of April and May 2009 by heavy rains which have caused floods, particularly in Afghanistan's northern provinces.



Projection & Grid Information

	Reference Grid	Geographic Grid
Projection:	UTM Zone 42 North	Geographic (DMS)
Spheroid:	WGS 84	WGS 84
Datum:	WGS 84	WGS 84

Satellite Information

Satellite:	DMC NigeriaSat-1	LANDSAT7 ETM+
Pixel Size:	32 m	14.25 m
Acquisition Date:	22 June 2008	2001
Georeferencing:	Orthorectification	Orthorectification

Credits & Copyright

Background images  
 © NASDRA 2008 supplied by DMCii  
 Processing SERTIT 2009  
 © USGS 2001 - Maryland GLCF  
 Processing SERTIT 2009  
 Vector layers  
 © SERTIT 2009  
 © ESRI

Date:	21th of May 2009
Edition:	1.0
Print Dimensions @ 1:500,000	ISO A1 size (841 x 594mm)

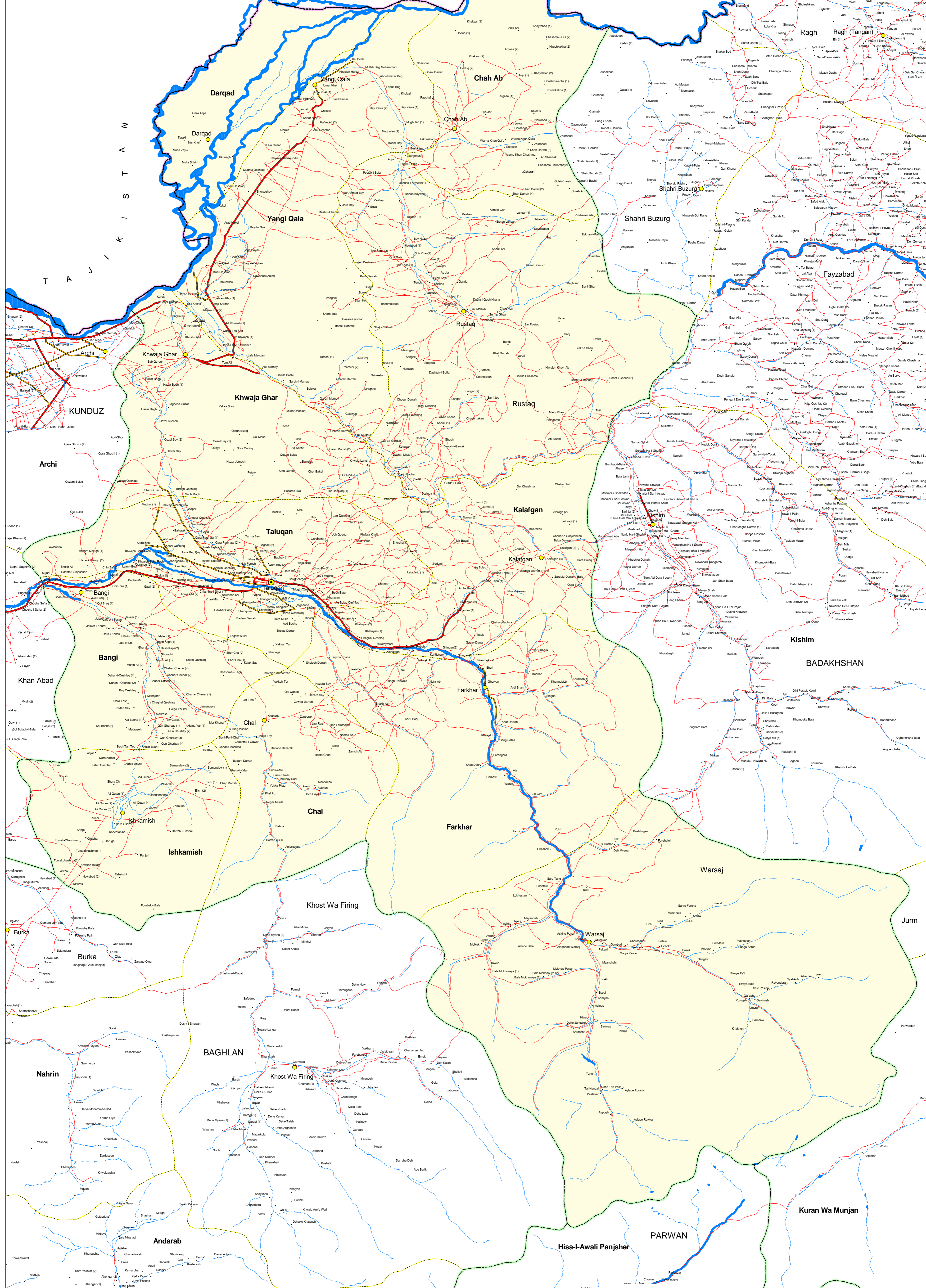
Respond and its suppliers have attempted to provide mapping that is as accurate as is available with the source material, however all geographic information has limitations due to the scale, resolution, date and interpretation of the original source materials. Accordingly, Respond maps are distributed as is, without any warranty, either expressed or implied, including but not limited to warranties of suitability for a particular purpose or use. The entire risk as to the results of the use of these data is assumed by the user and the supplier accepts no liability for any loss, damage or inconvenience caused as a result of reliance on the mapping.



Data provision: User coordination / Map generation:

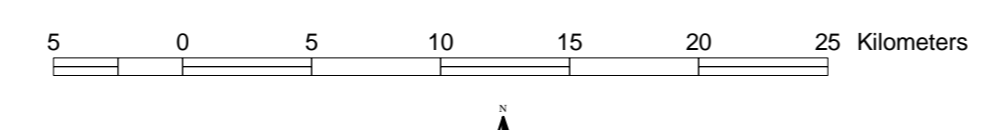


**AFGHANISTAN  
TAKHAR PROVINCE**

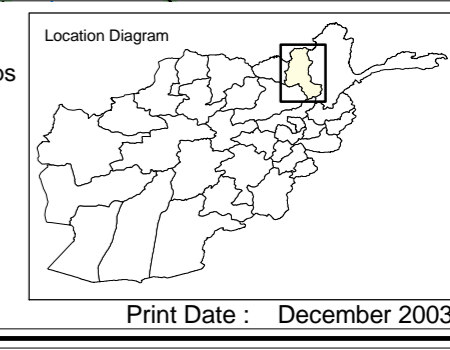


**LEGEND**

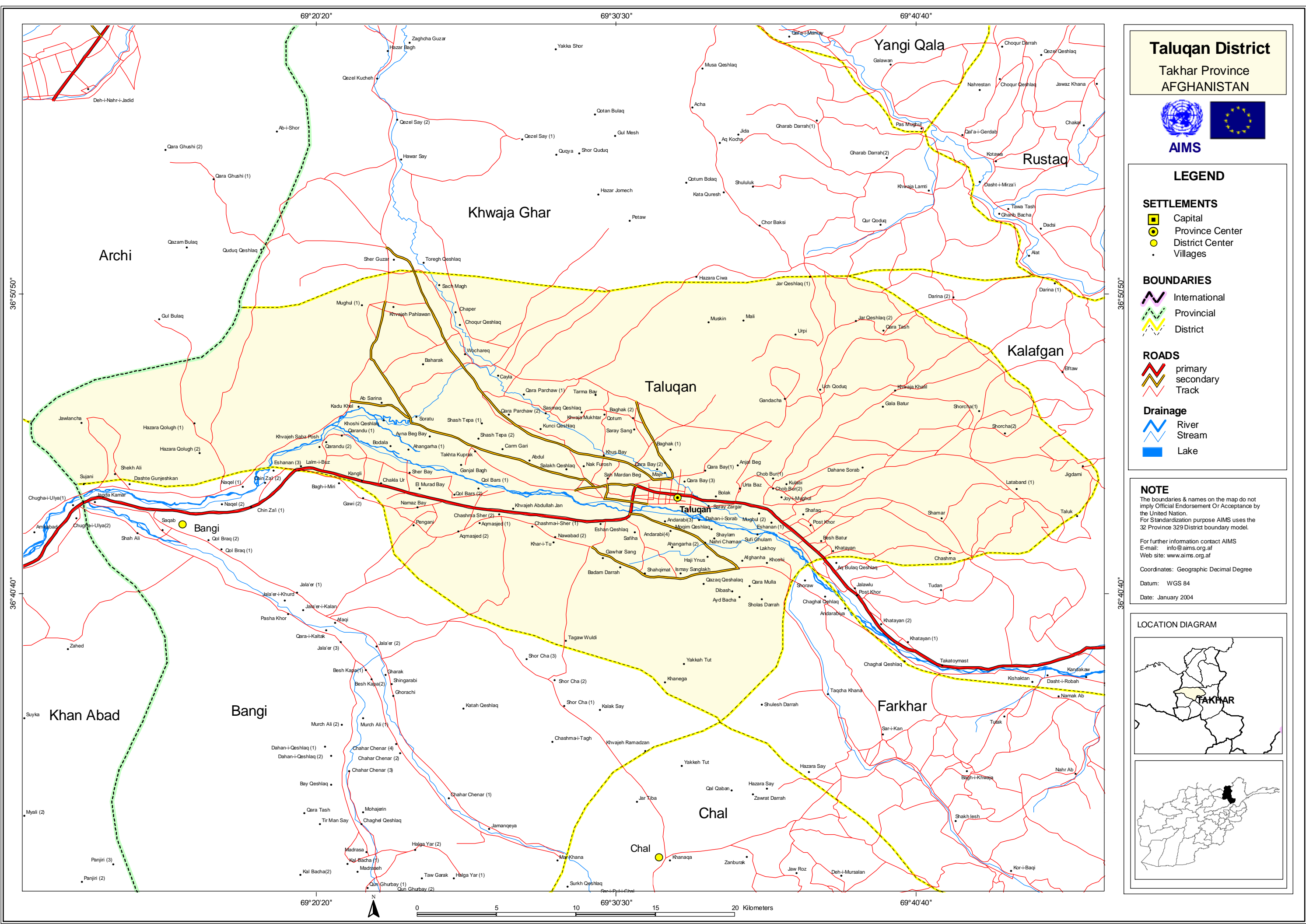
- |                   |                       |               |                    |
|-------------------|-----------------------|---------------|--------------------|
| <b>BOUNDARIES</b> | <b>ROADS</b>          | <b>RIVERS</b> | <b>SETTLEMENTS</b> |
| International     | All weather primary   | Main          | Capital            |
| Province          | All weather secondary | Stream        | Province Center    |
| District          | Track                 | Lake          | District Center    |
|                   |                       |               | Village            |



**Note:**  
The boundaries and names on the maps do not imply official endorsement or acceptance by the United Nations. For further information contact AIMS.  
Email: info@aims.org.af  
http://www.aims.org.af  
Administrative boundaries are the 32 province 329 district model.







**Taluqan District**  
Takhar Province  
AFGHANISTAN



**LEGEND**

**SETTLEMENTS**

- Capital
- Province Center
- District Center
- Villages

**BOUNDARIES**

- International
- Provincial
- District

**ROADS**

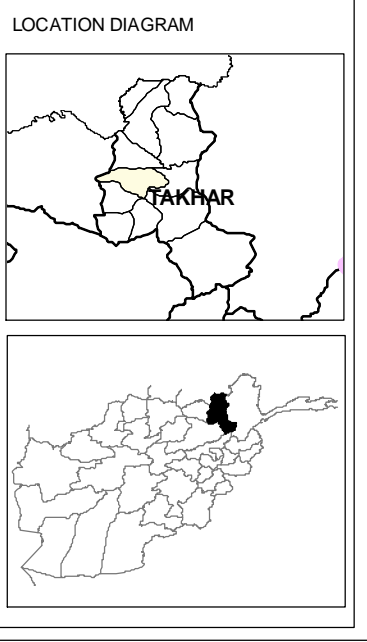
- primary
- secondary
- Track

**Drainage**

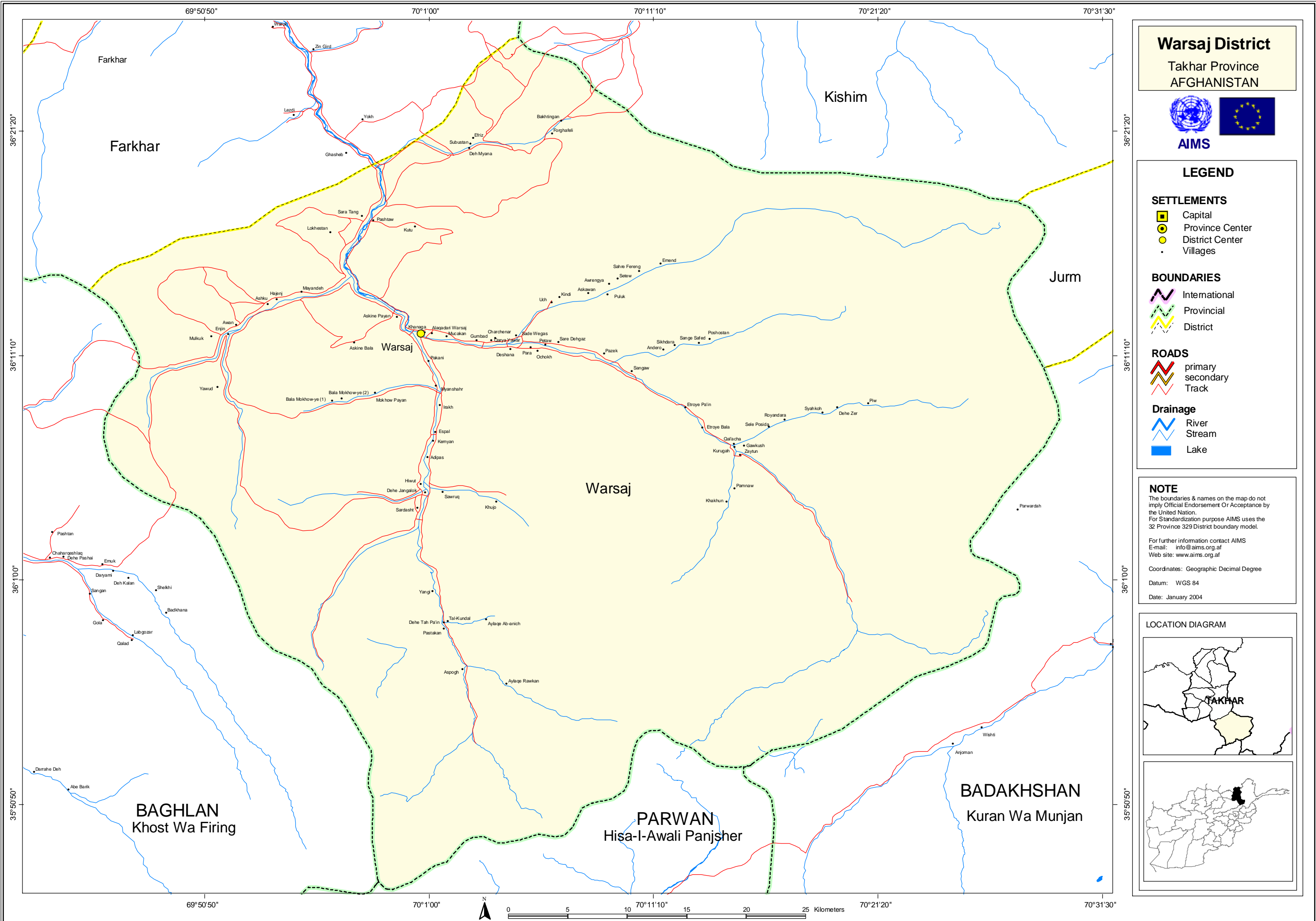
- River
- Stream
- Lake

**NOTE**  
The boundaries & names on the map do not imply Official Endorsement Or Acceptance by the United Nation.  
For Standardization purpose AIMS uses the 32 Province 329 District boundary model.  
For further information contact AIMS  
E-mail: info@aims.org.af  
Web site: www.aims.org.af

Coordinates: Geographic Decimal Degree  
Datum: WGS 84  
Date: January 2004







**Warsaj District**  
Takhar Province  
AFGHANISTAN



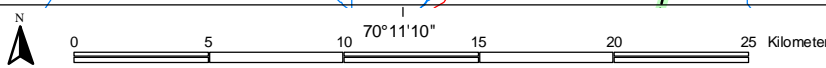
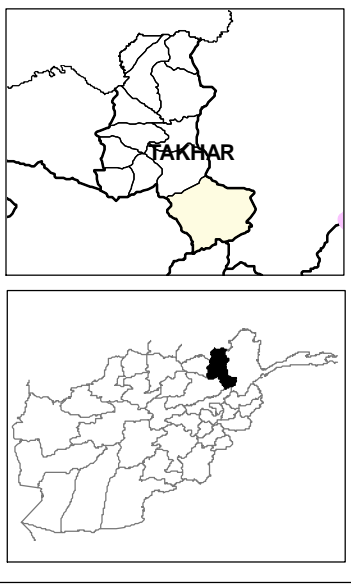
**LEGEND**

- SETTLEMENTS**
- Capital
  - Province Center
  - District Center
  - Villages
- BOUNDARIES**
- International
  - Provincial
  - District
- ROADS**
- primary
  - secondary
  - Track
- Drainage**
- River
  - Stream
  - Lake

**NOTE**  
The boundaries & names on the map do not imply Official Endorsement Or Acceptance by the United Nation.  
For Standardization purpose AIMS uses the 32 Province 329 District boundary model.  
For further information contact AIMS  
E-mail: [info@aims.org.af](mailto:info@aims.org.af)  
Web site: [www.aims.org.af](http://www.aims.org.af)

Coordinates: Geographic Decimal Degree  
Datum: WGS 84  
Date: January 2004

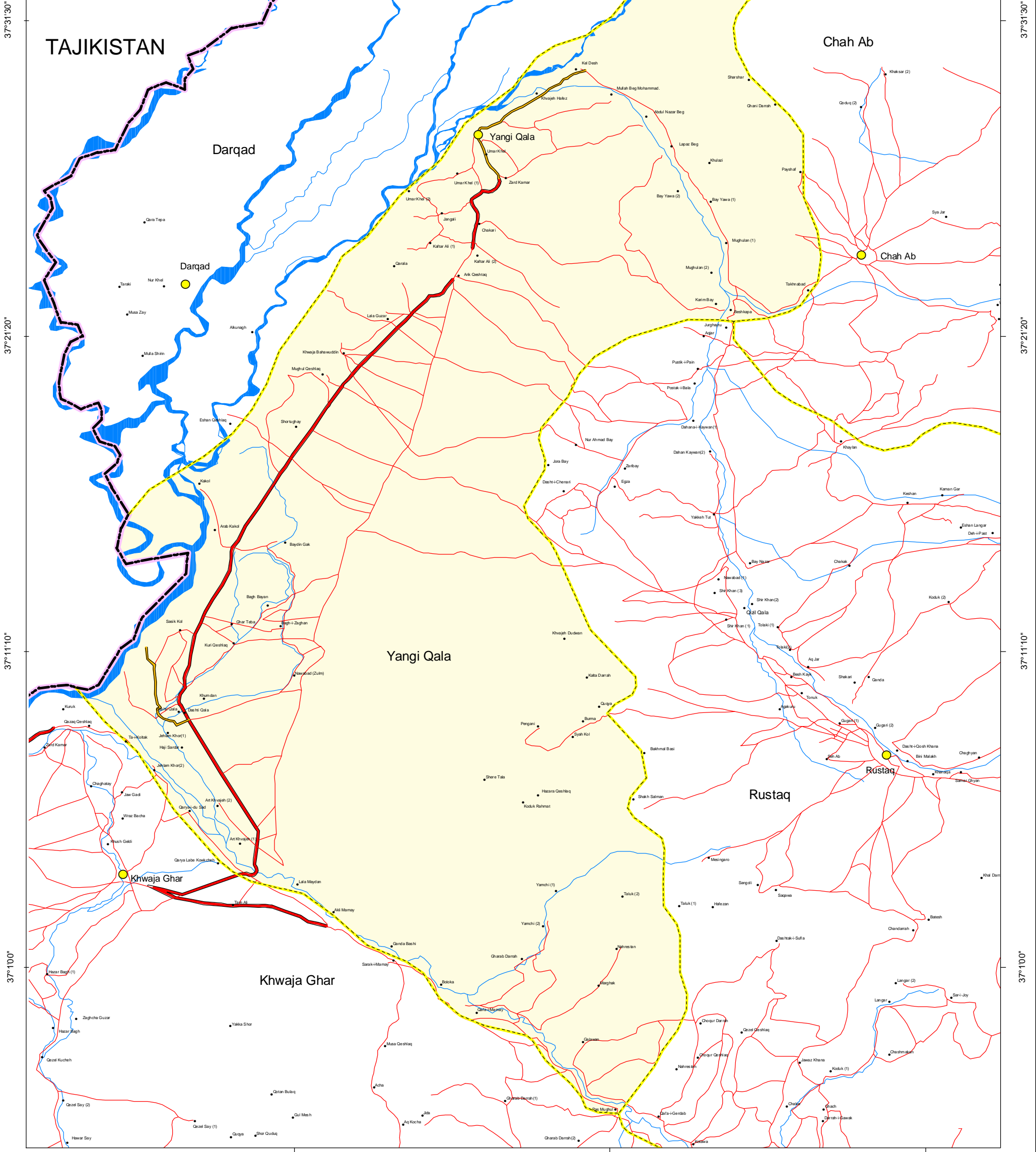
**LOCATION DIAGRAM**



**Yangi Qala District**  
Takhar Province  
AFGHANISTAN

37°31'30"

TAJIKISTAN



37°21'20"

37°21'20"

37°11'10"

37°11'10"

37°10'0"

37°10'0"

69°30'30"

69°40'40"

69°50'50"

37°31'30"

37°21'20"

37°11'10"

37°10'0"

69°30'30"

69°40'40"

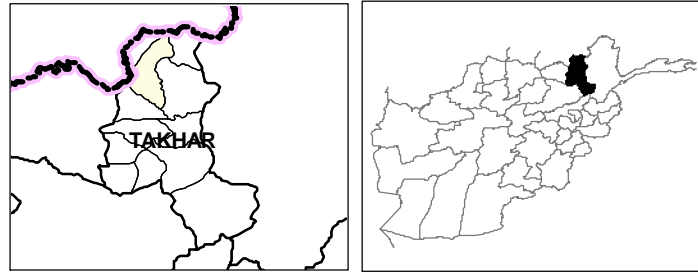
69°50'50"



**NOTE**

The boundaries & names on the map do not imply Official Endorsement Or Acceptance by the United Nation.  
For Standardization purpose AIMS uses the 32 Province 329 District boundary model.  
For further information contact AIMS  
E-mail: [info@aims.org.af](mailto:info@aims.org.af)  
Web site: [www.aims.org.af](http://www.aims.org.af)  
Coordinates: Geographic Decimal Degree  
Datum: WGS 84  
Date: January 2004

**LOCATION DIAGRAM**



**LEGEND**

**SETTLEMENTS**

- Capital
- Province Center
- District Center
- Villages

**BOUNDARIES**

- International
- Provincial
- District

**ROADS**

- primary
- secondary
- Track

**Drainage**

- River
- Stream
- Lake

