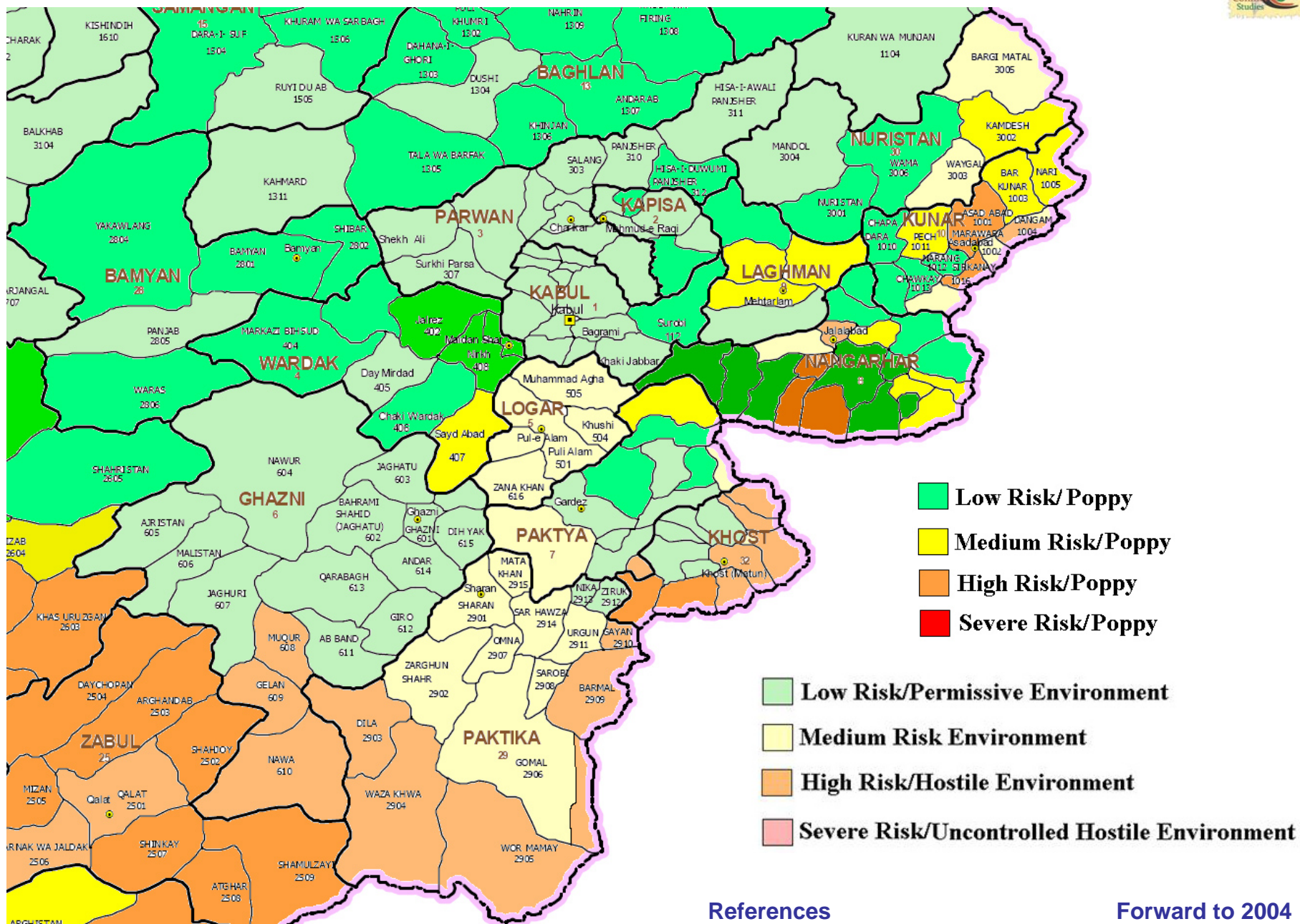


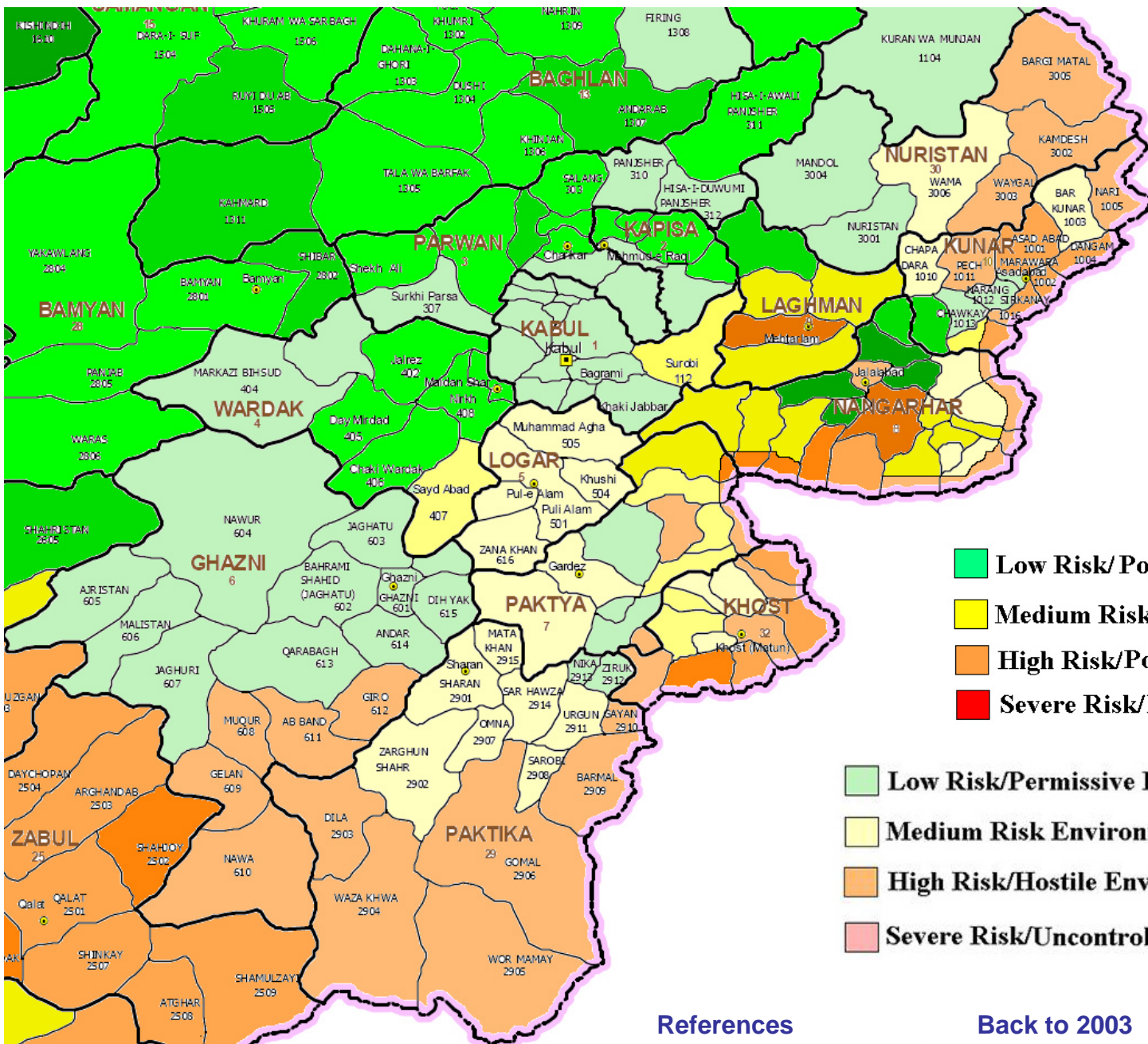
# East Afghanistan Security / Poppy Map 2003



References

Forward to 2004

# East Afghanistan Security / Poppy Map 2004



- Low Risk/Poppy**
- Medium Risk/Poppy**
- High Risk/Poppy**
- Severe Risk/Poppy**

- Low Risk/Permissive Environment**
- Medium Risk Environment**
- High Risk/Hostile Environment**
- Severe Risk/Uncontrolled Hostile Environment**

[References](#)

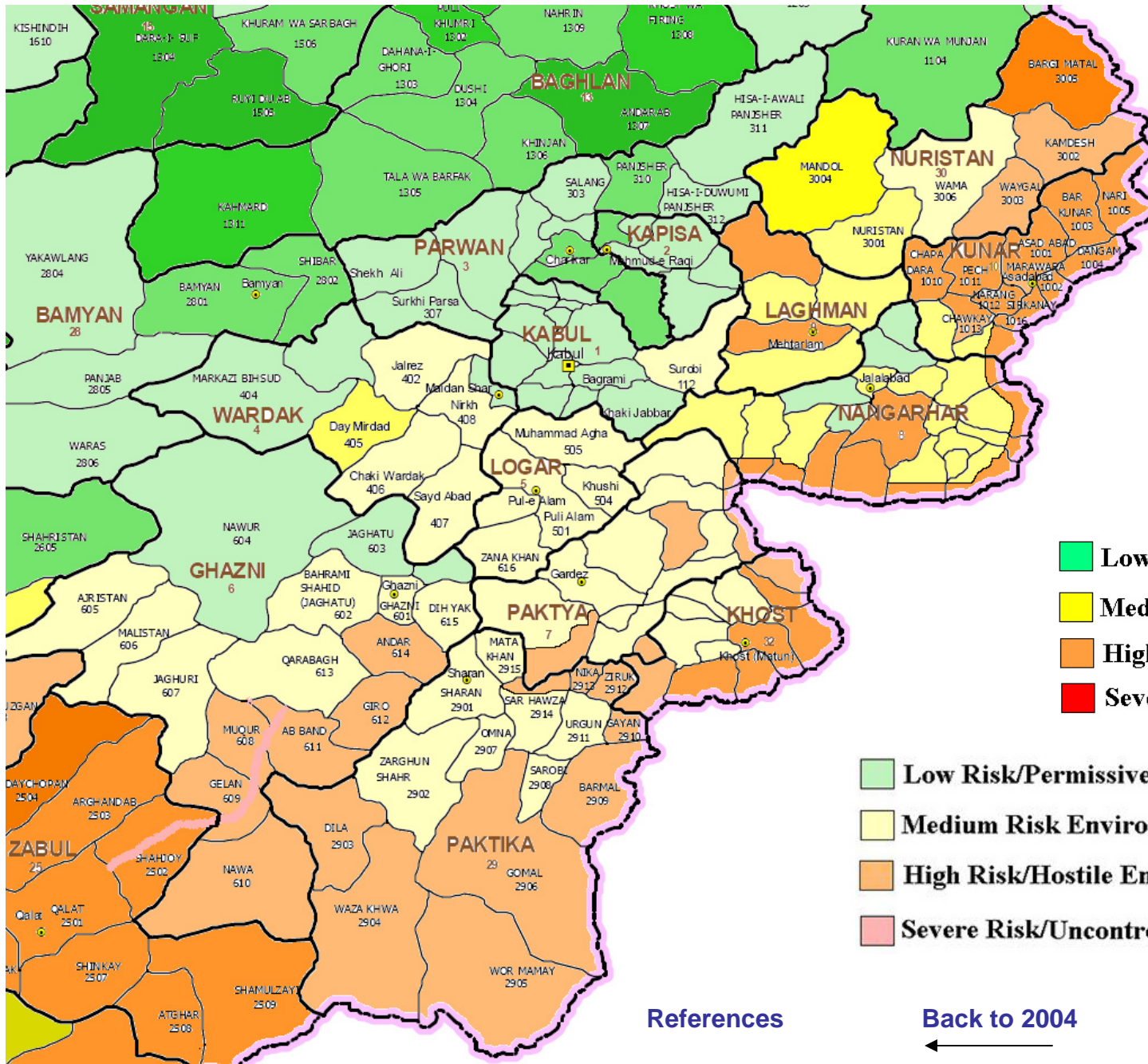
[Back to 2003](#)

[Forward to 2005](#)





# East Afghanistan Security / Poppy Map 2005



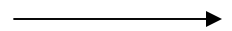
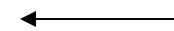
- Low Risk/Poppy
- Medium Risk/Poppy
- High Risk/Poppy
- Severe Risk/Poppy

- Low Risk/Permissive Environment
- Medium Risk Environment
- High Risk/Hostile Environment
- Severe Risk/Uncontrolled Hostile Environment

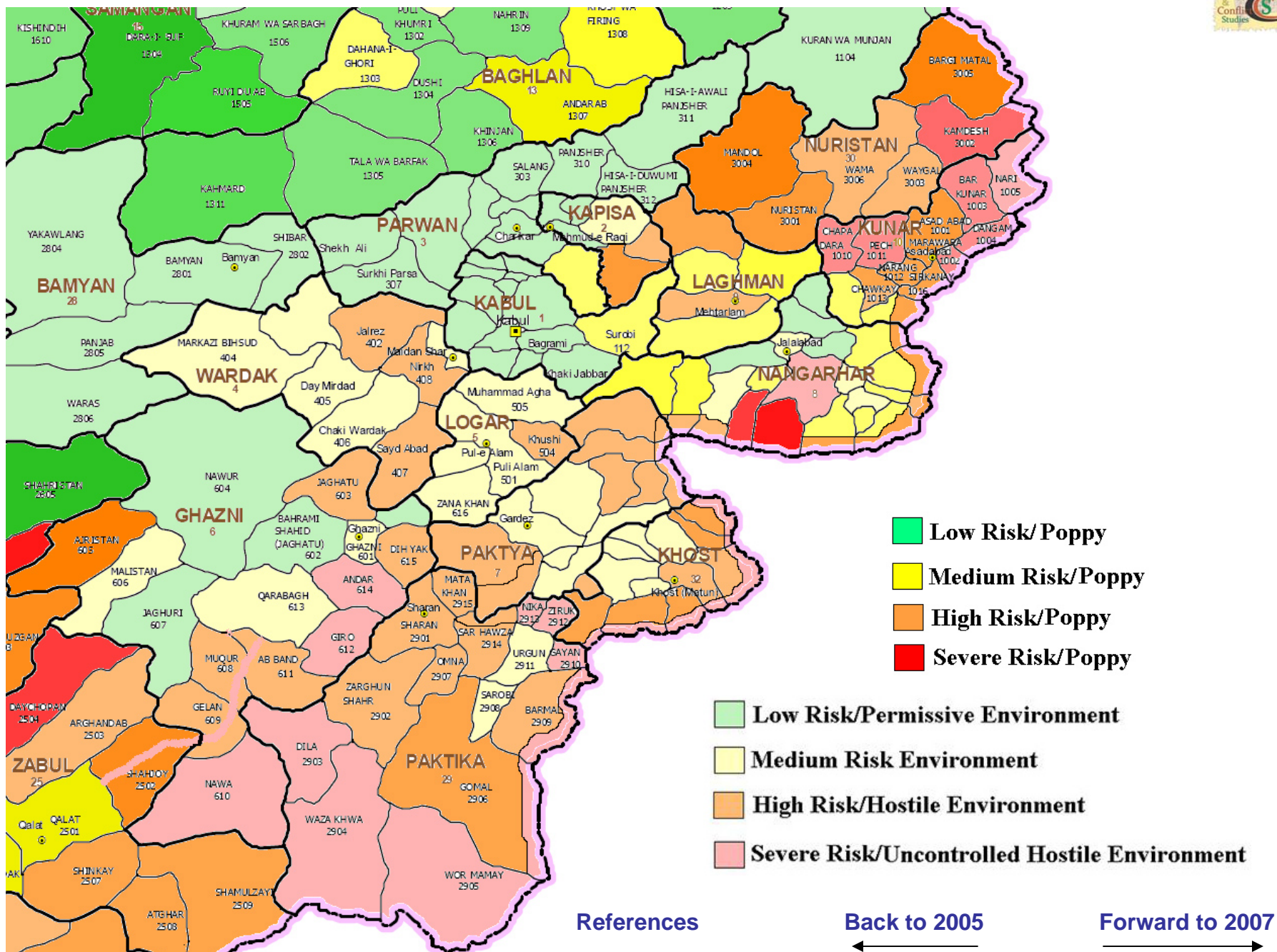
References

[Back to 2004](#)

[Forward to 2006](#)



# East Afghanistan Security / Poppy Map 2006



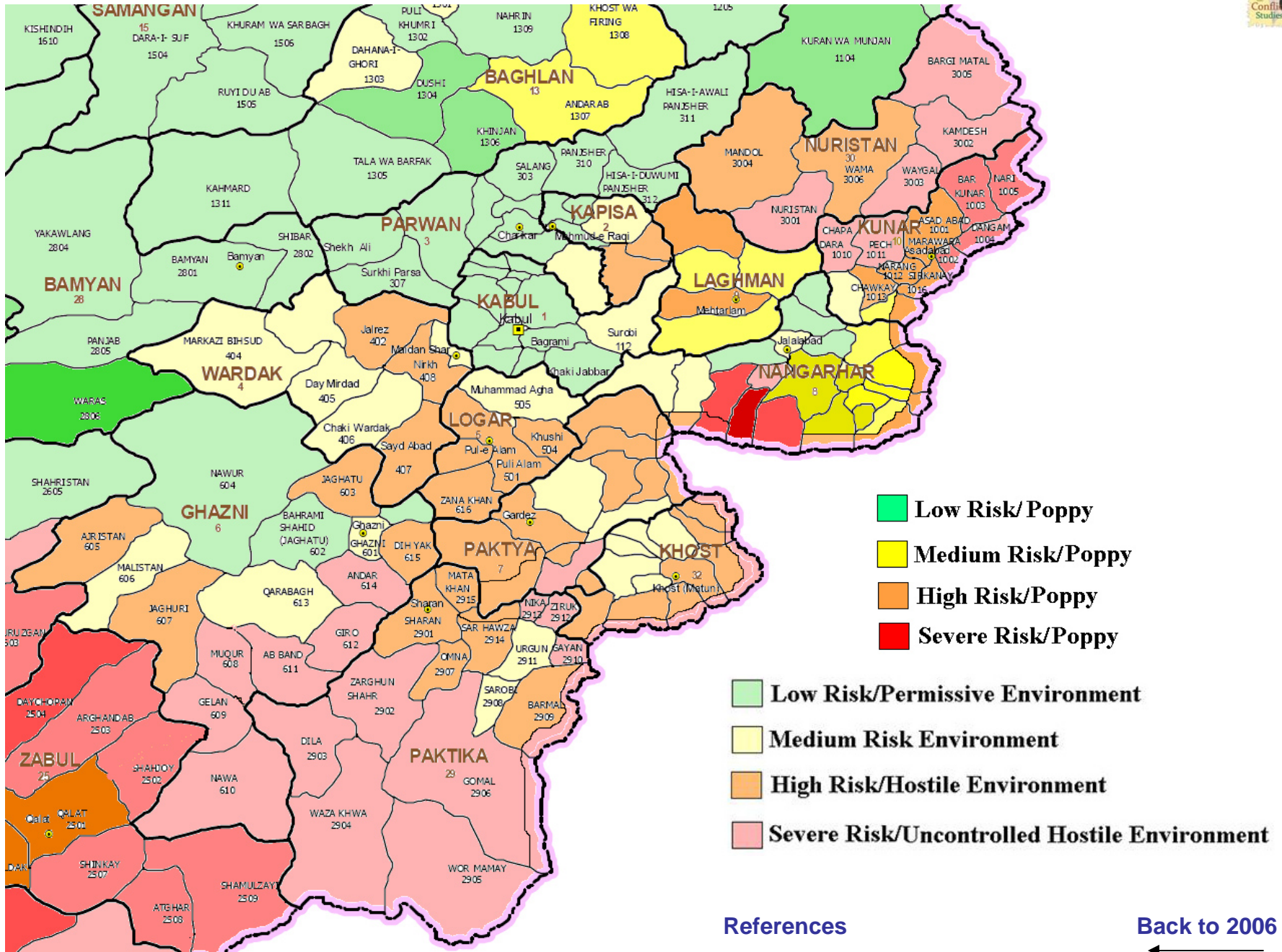
[References](#)

[Back to 2005](#)

[Forward to 2007](#)

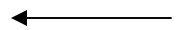


# East Afghanistan Security / Poppy Map 2007



References

[Back to 2006](#)



# References

- Afghanistan Information Management Services (AIMS).
- United Nations Assistance Mission in Afghanistan (UNAMA). Risk Assessment maps (2003, 2004, 2005, 2006, 2007).
- United Nations Organization for Displaced People (UNODP). Annual Poppy survey maps (2003, 2004, 2005, 2006, 2007).