



Littorals

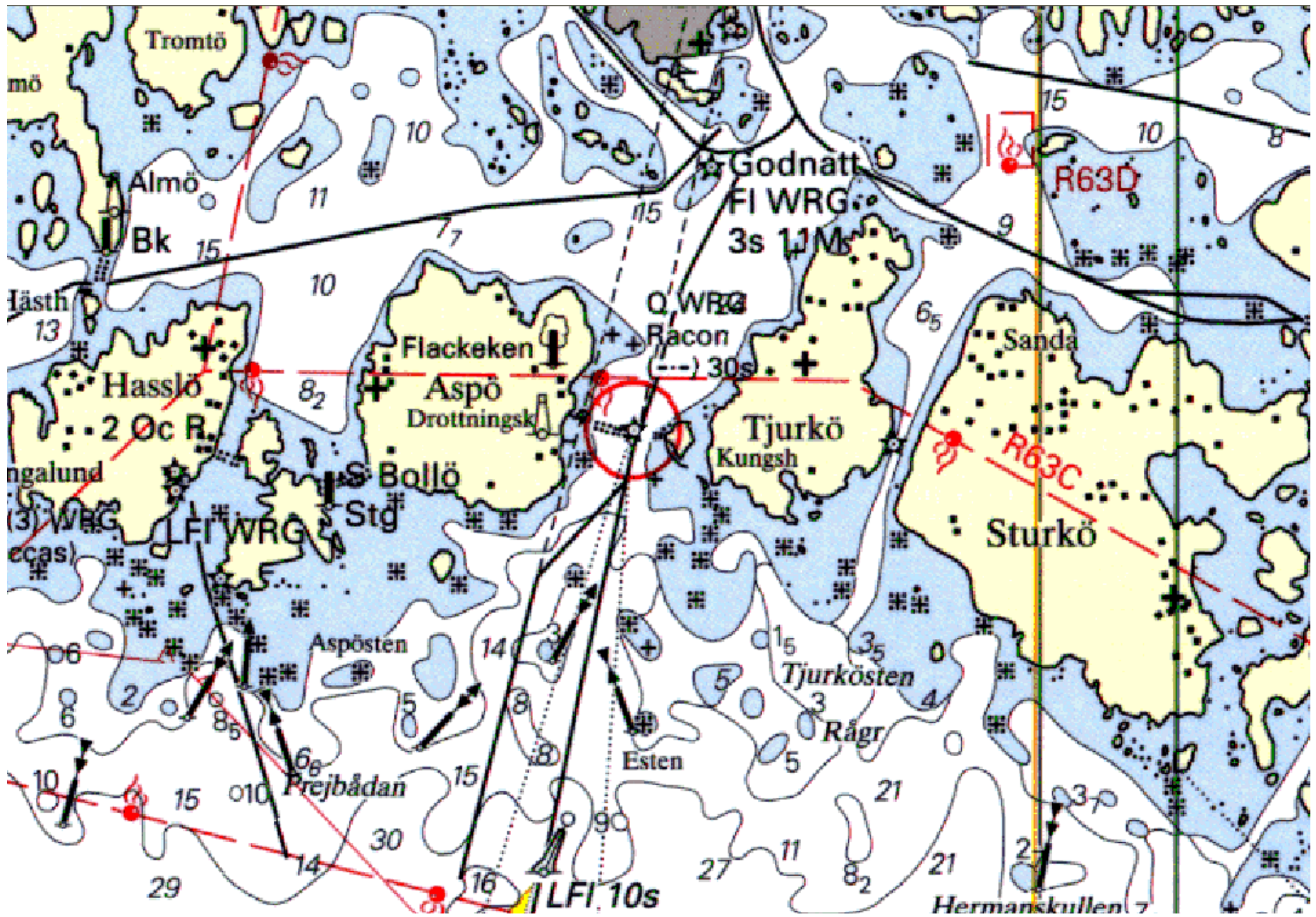
Those areas on land that are subject to influence by units operating at or from the sea; and those areas at sea subject to influence by forces operating on or from the land

The background is a nautical chart of the Baltic Sea region. It shows landmasses in yellow and blue water. A red circle is drawn around a specific area in the central part of the sea, between the Swedish coast to the north and the Polish coast to the south. The chart includes depth contours, soundings, and various navigational symbols.

Extreme Littorals

Coastal areas that are characterised by very shallow and congested waters with harsh hydrographical and/or hydroacoustic conditions.

It is also to be seen upon as an high-threat environment in all aspects, not only according to underwater threats but to a 4-dimensional – on, above, under the surface and from land



Advantages

○ Combined ops

- Multifunctionality
- Experience
- Local environment
- Threat

○ Challenges

- Understanding
- Available assets



- **Complex environment** - easy to hide, difficult to detect

- **Heavy sea traffic** - ferries, merchant ships, fishing and pleasure boats

- **Short reaction times**

- **Limited space** – short distances and lack of space to defend in depth and to manoeuvre

