



LITTORAL OPTECH-*WEST*

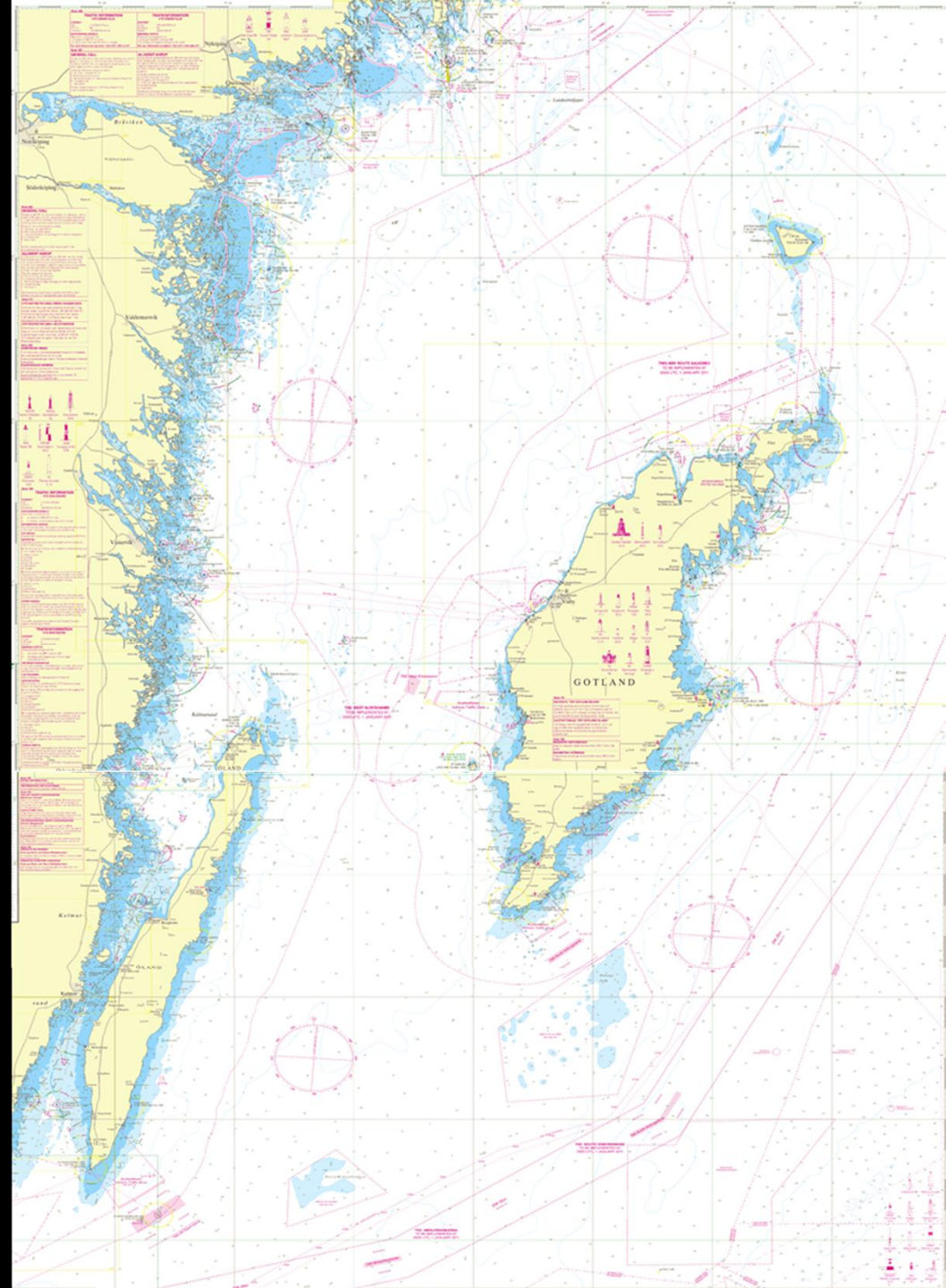
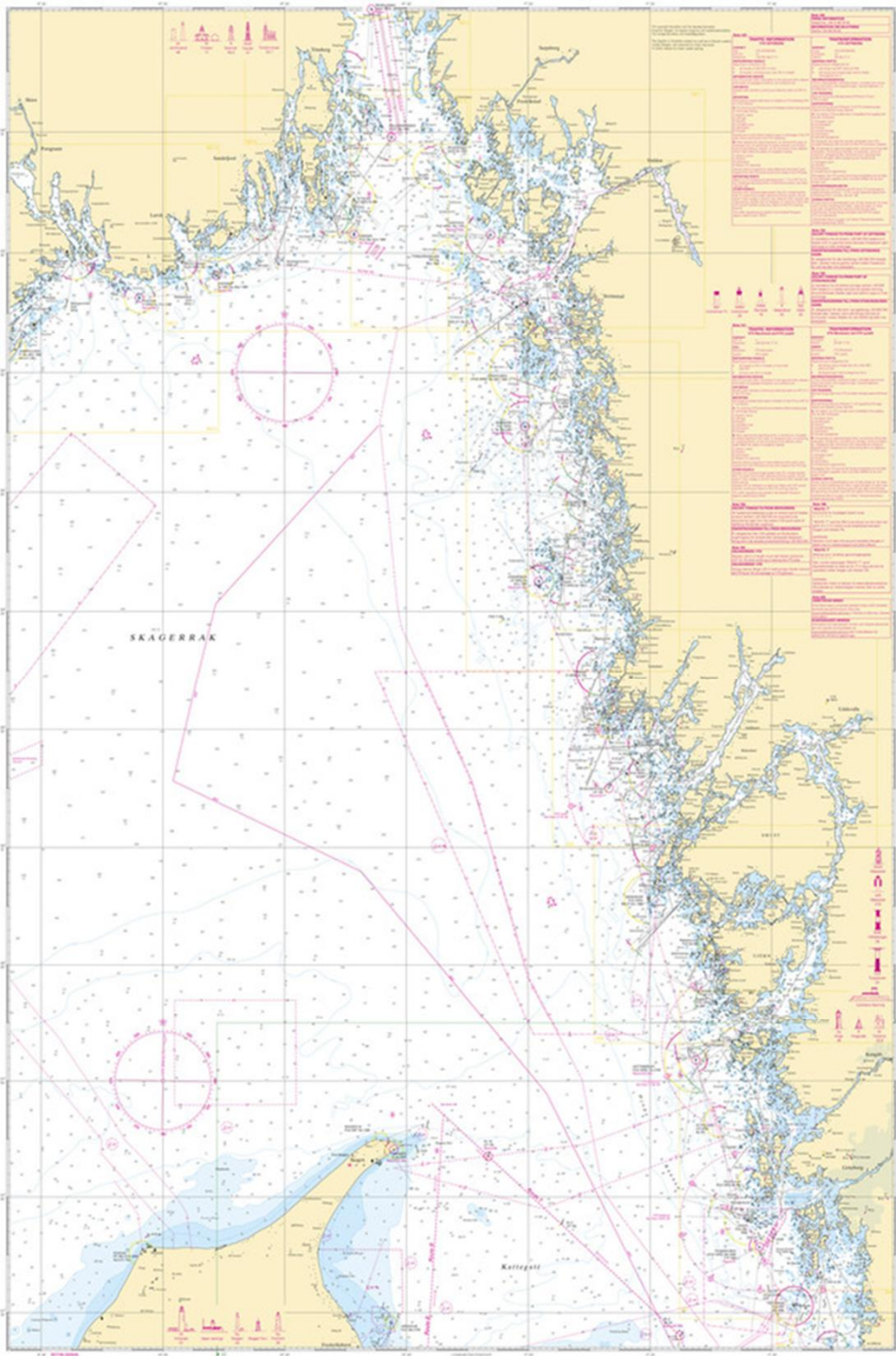
September 23rd & 24th, 2014

Swedish National Defence College
Stockholm, Sweden

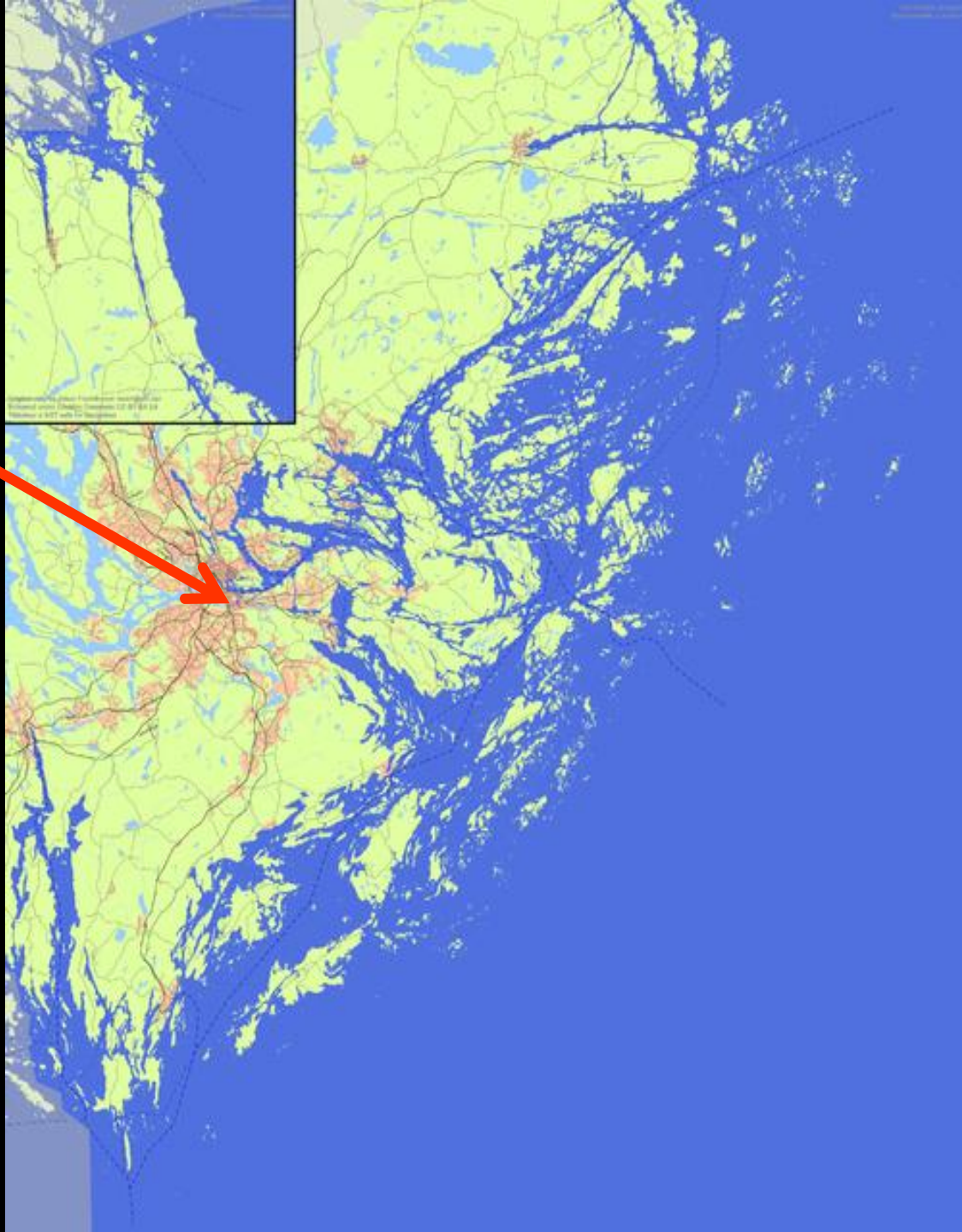
Rear Admiral Jan Thörnqvist
Chief of Staff, Royal Swedish Navy



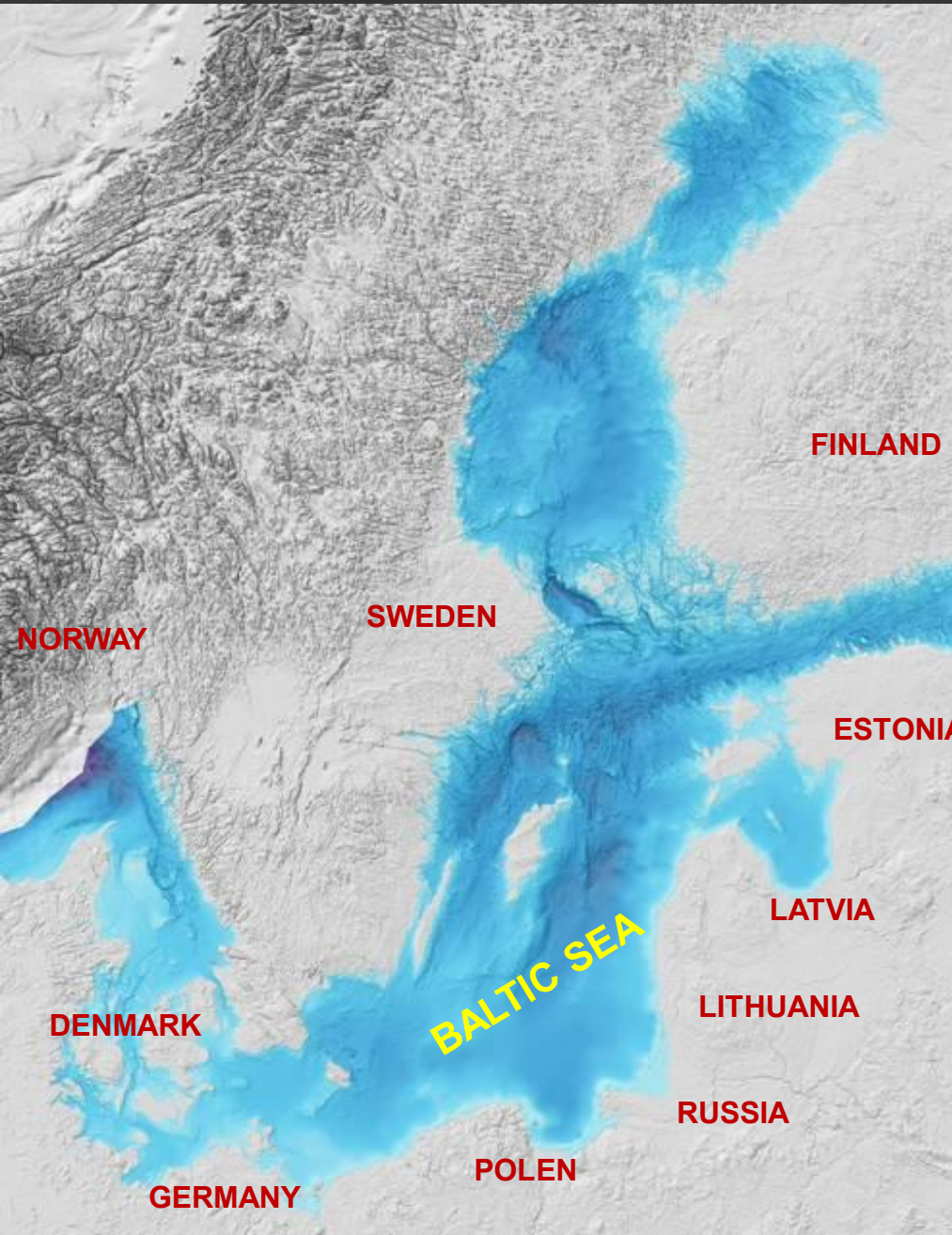




Here we are!







- **Approx. 90 million people live in the area.**
- **Some of the busiest shipping routes in the world.**
- **40% of Russian trade.**
- **2000 – 4000 sizeable ships in the Baltic Sea at any given moment.**
- **Oil and energy distribution increasing.**
- **Energy – distribution on land and under sea surface.**
- **Developed Baltic cooperation.**
- **Sensitive environment and eco systems.**
- **Salt water in the west and brackish water in the east.**
- **Maximum depth is 459m (average 55m).**



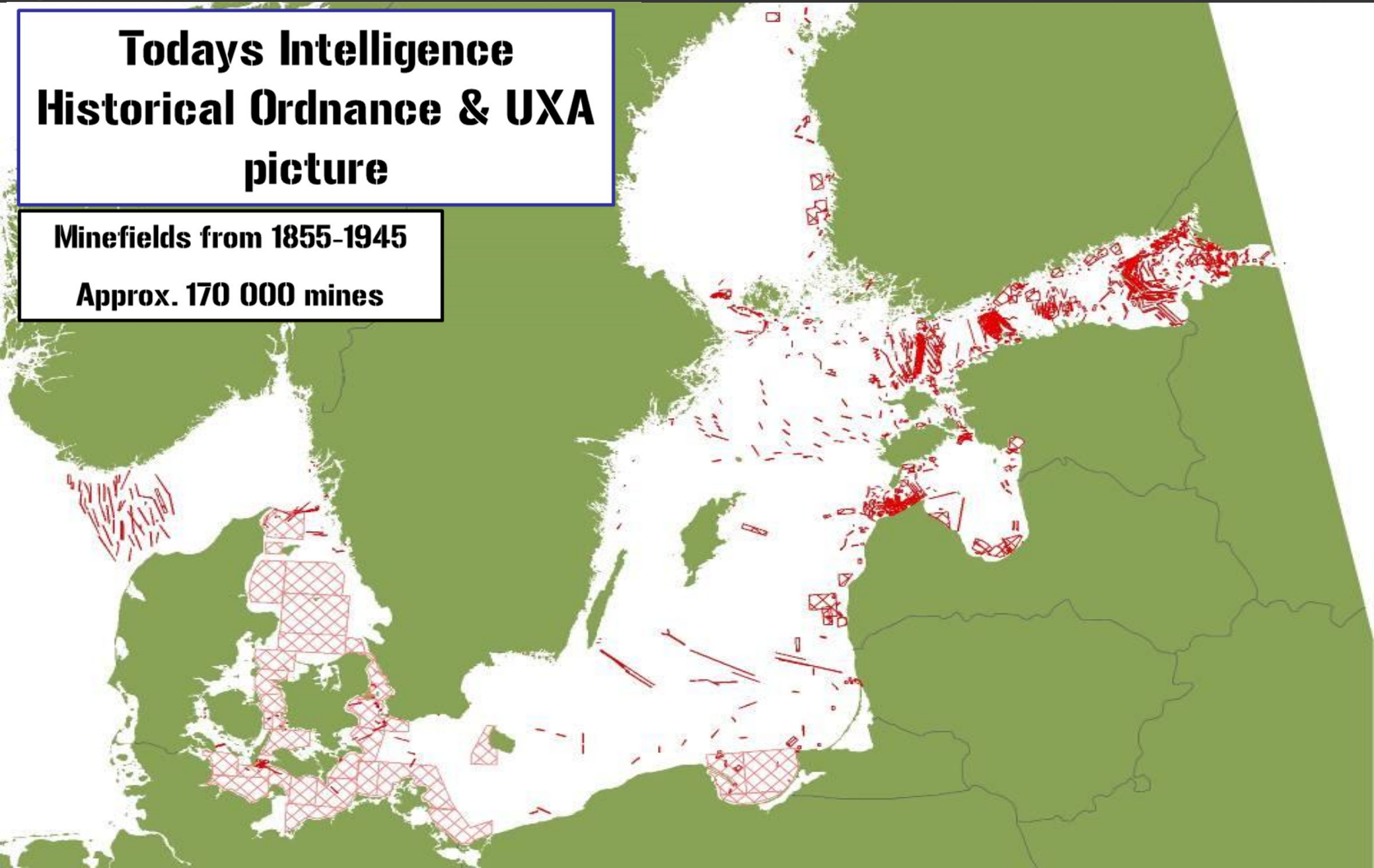




Today's Intelligence Historical Ordnance & UXA picture

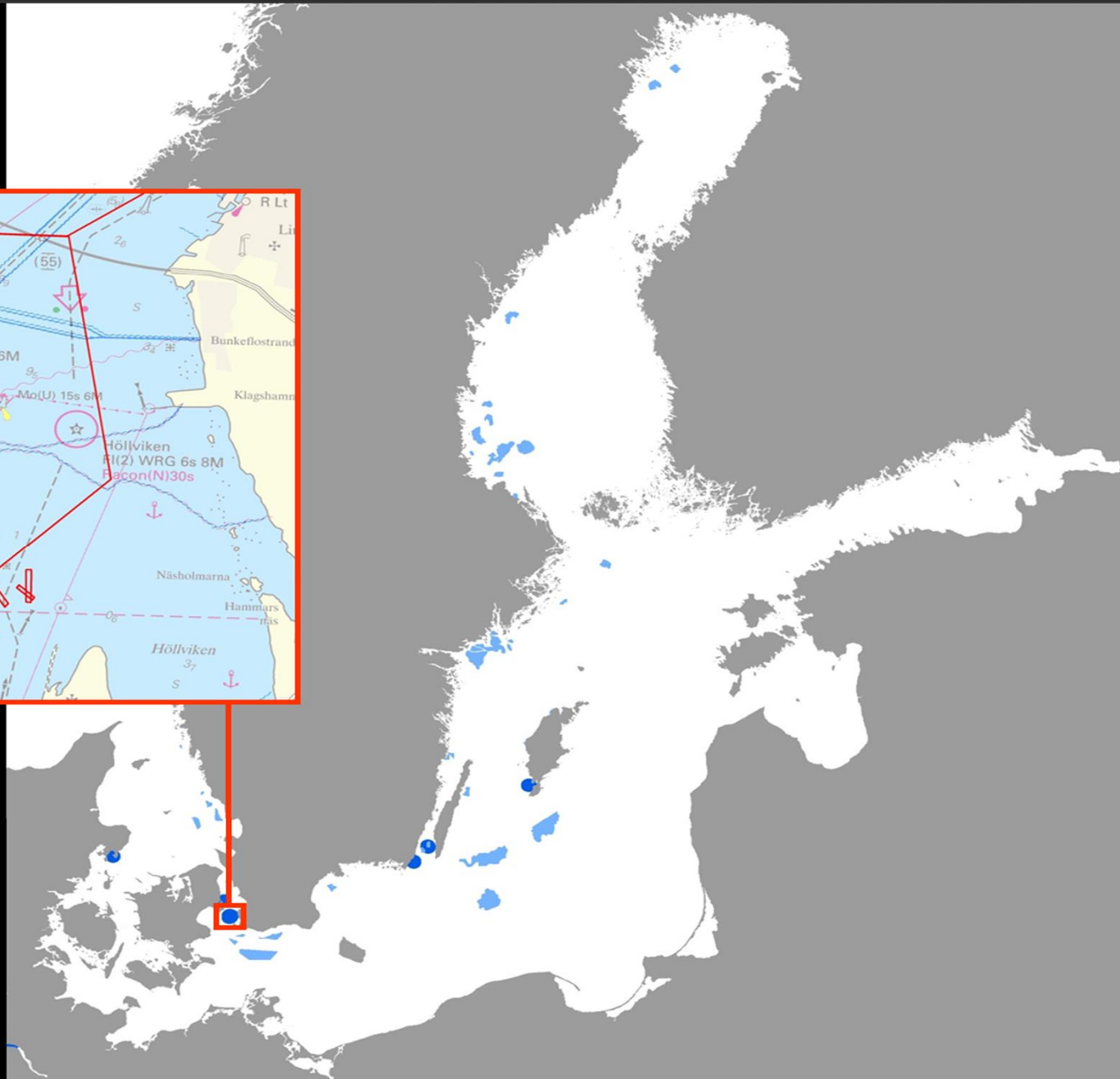
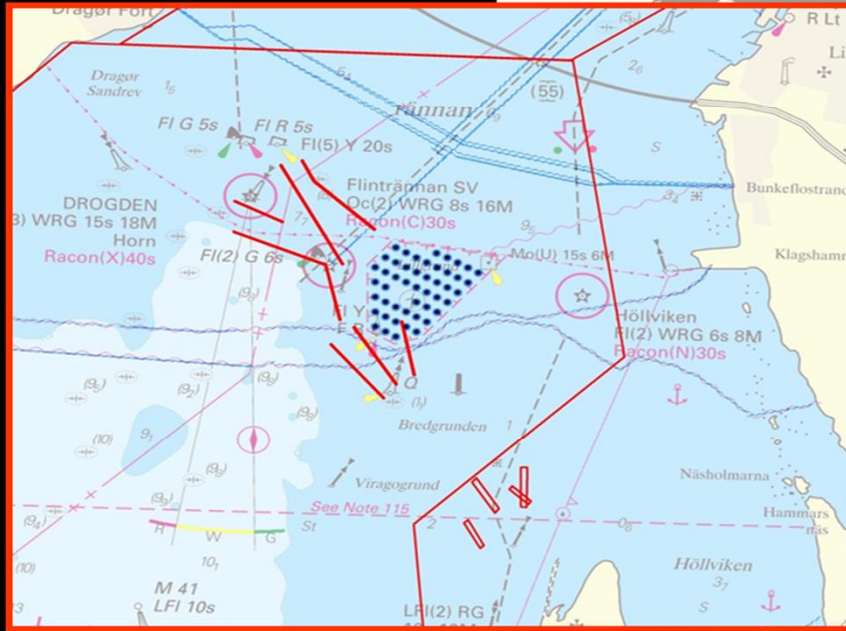
Minefields from 1855-1945

Approx. 170 000 mines



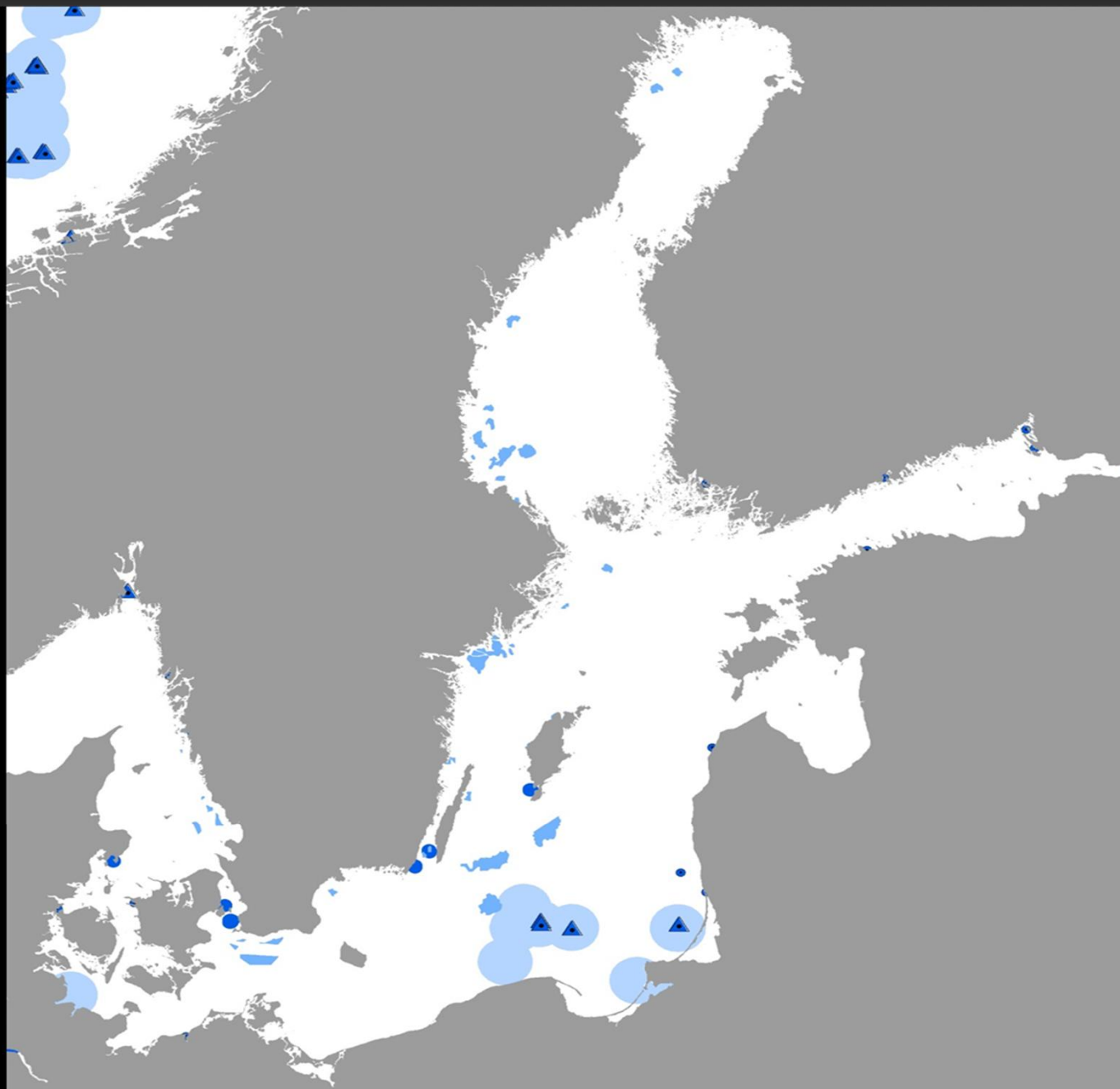


Wind power



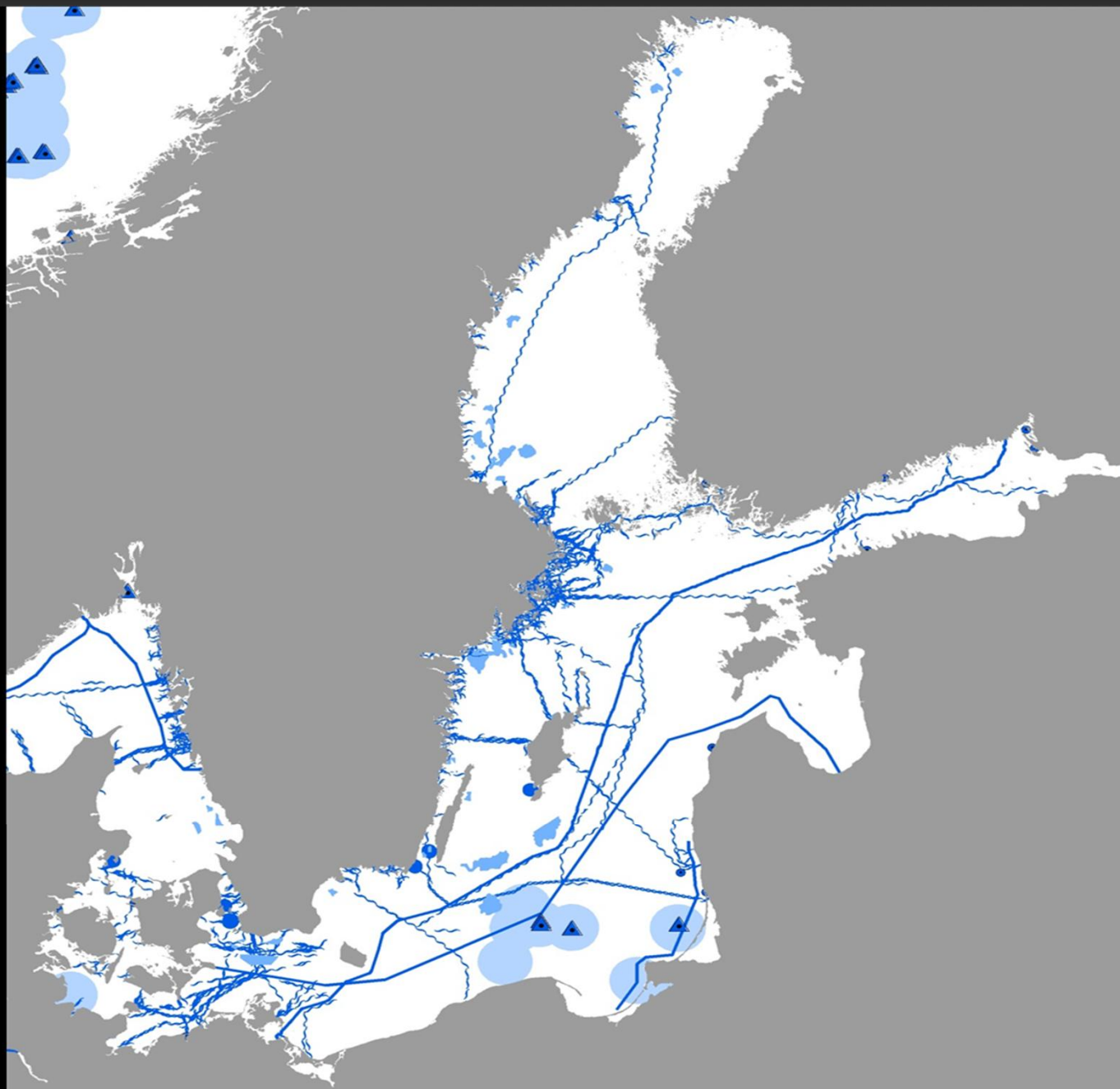


Wind power & Oil



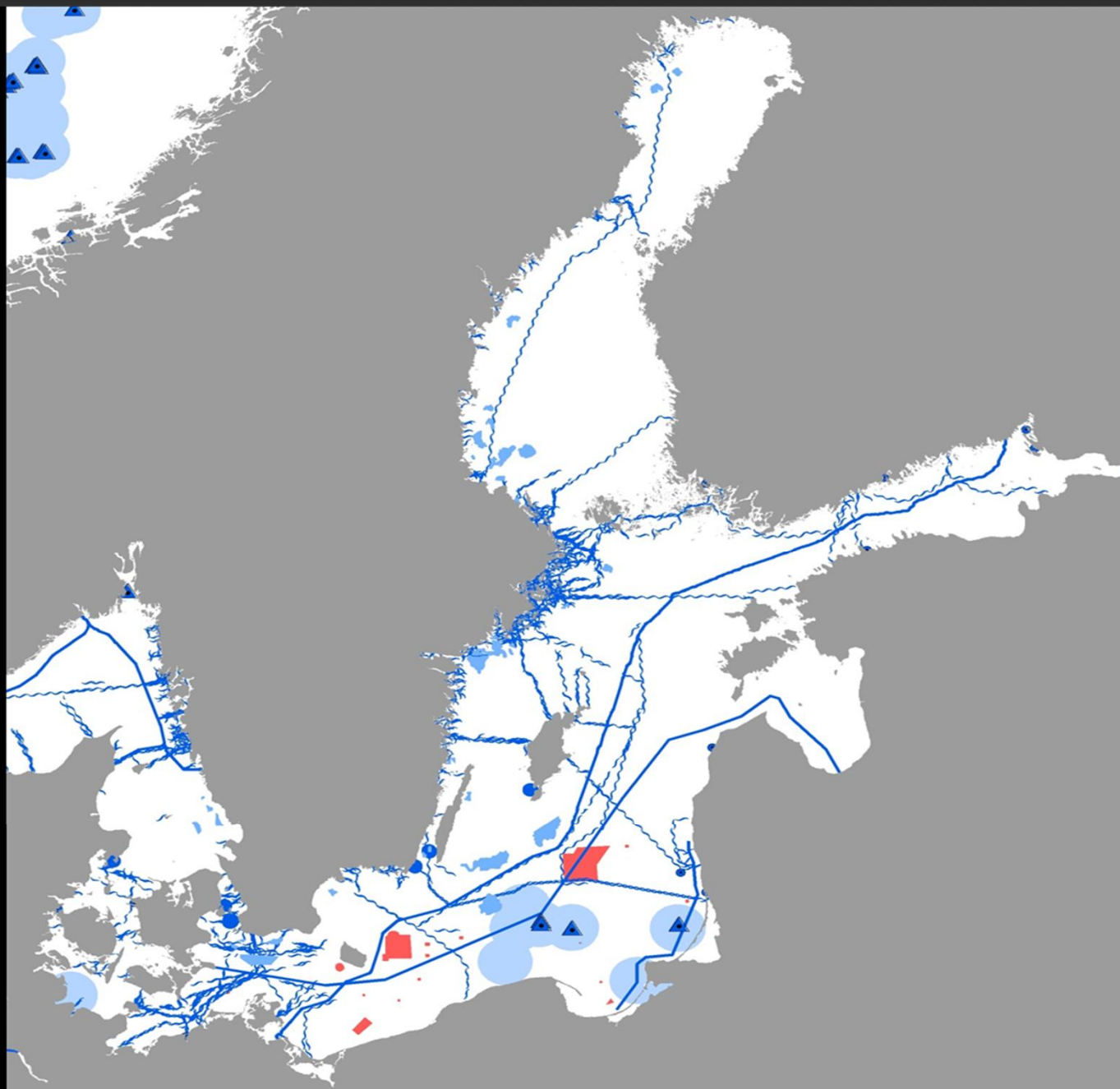


Wind power &
Oil & Cables &
Pipelines



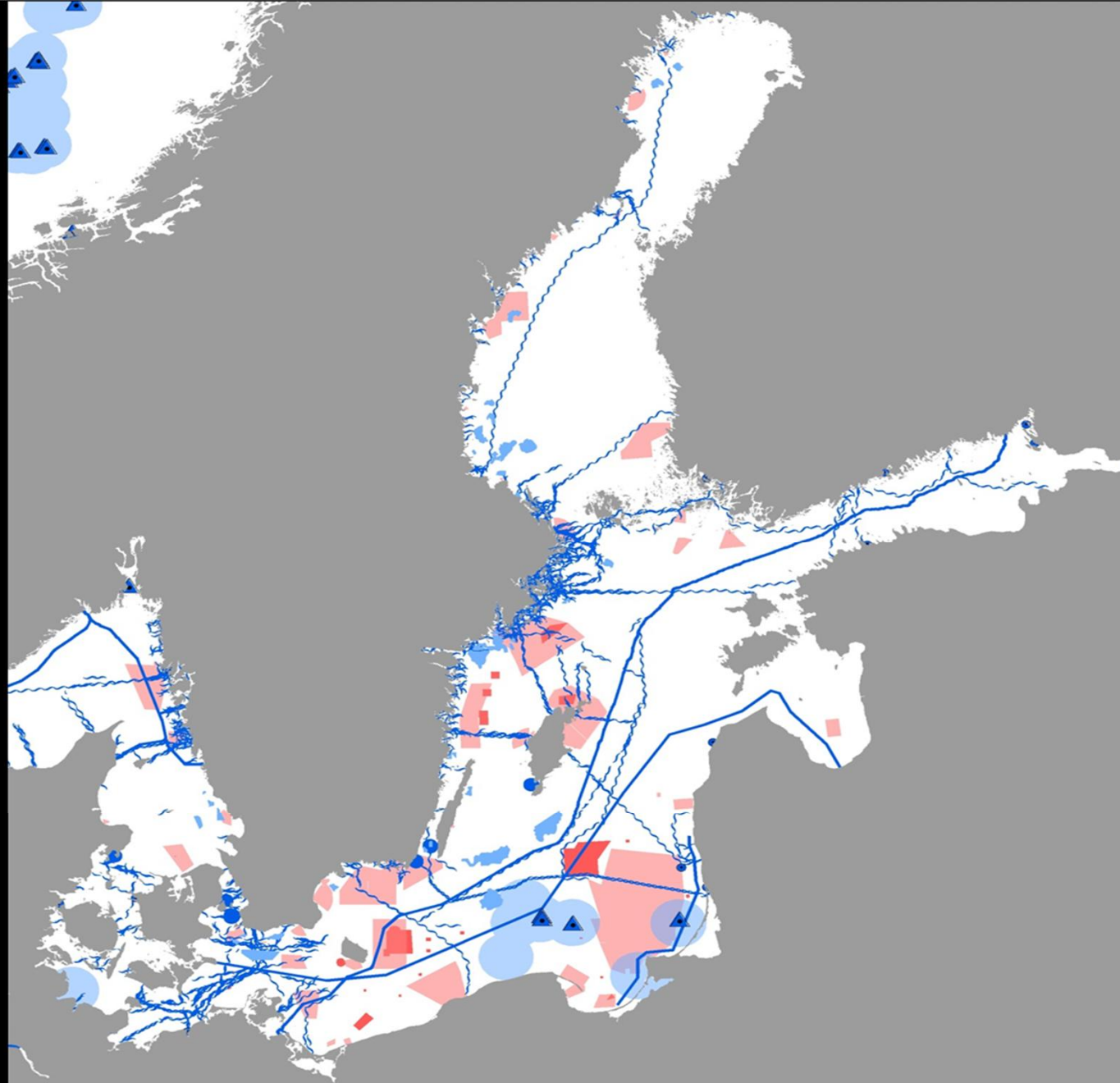


Wind power & Oil &
Cables & Pipelines &
Dumping areas



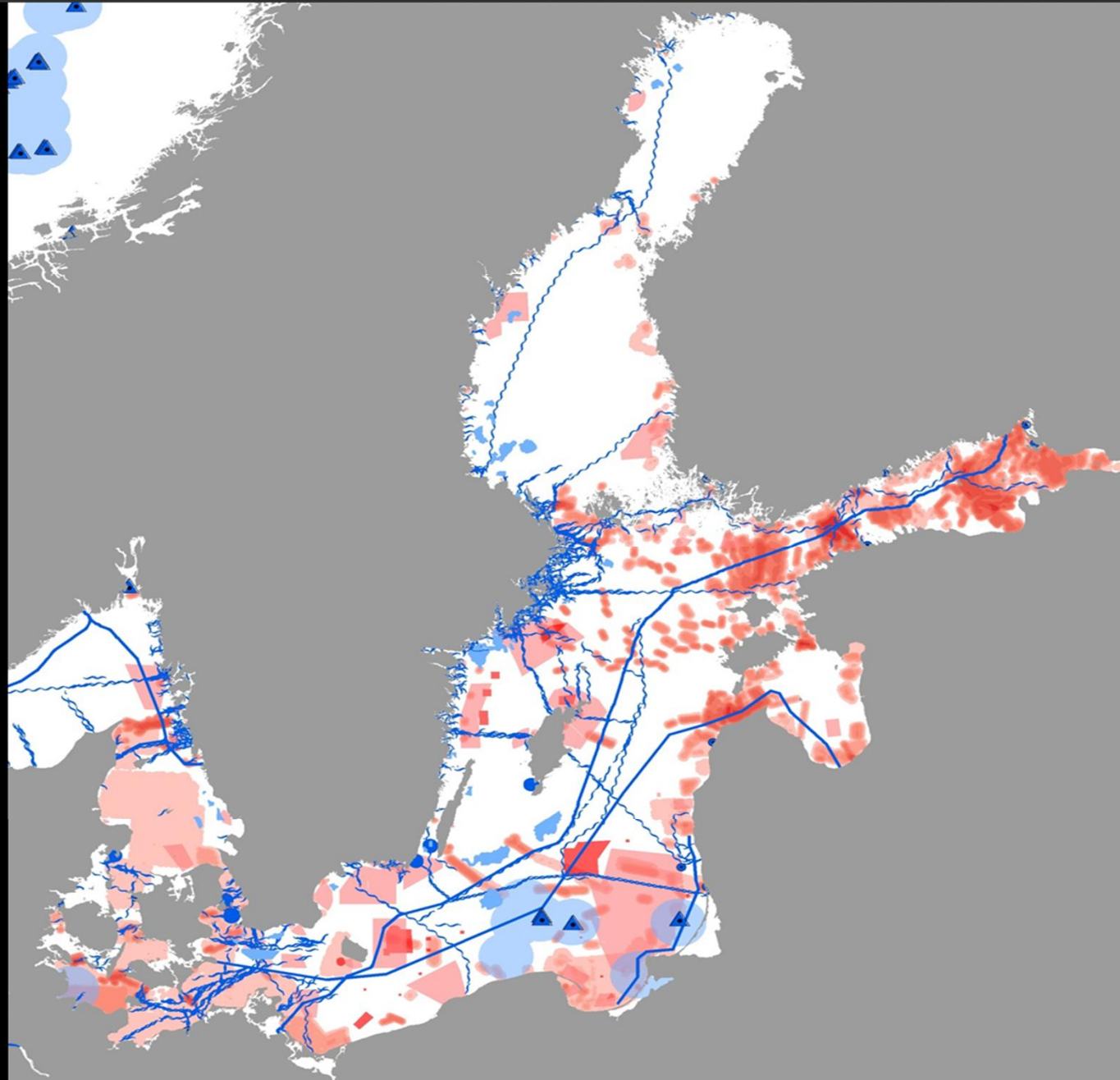


**Wind power & Oil &
Cables & Pipelines &
Dumping areas &
Exercise areas**



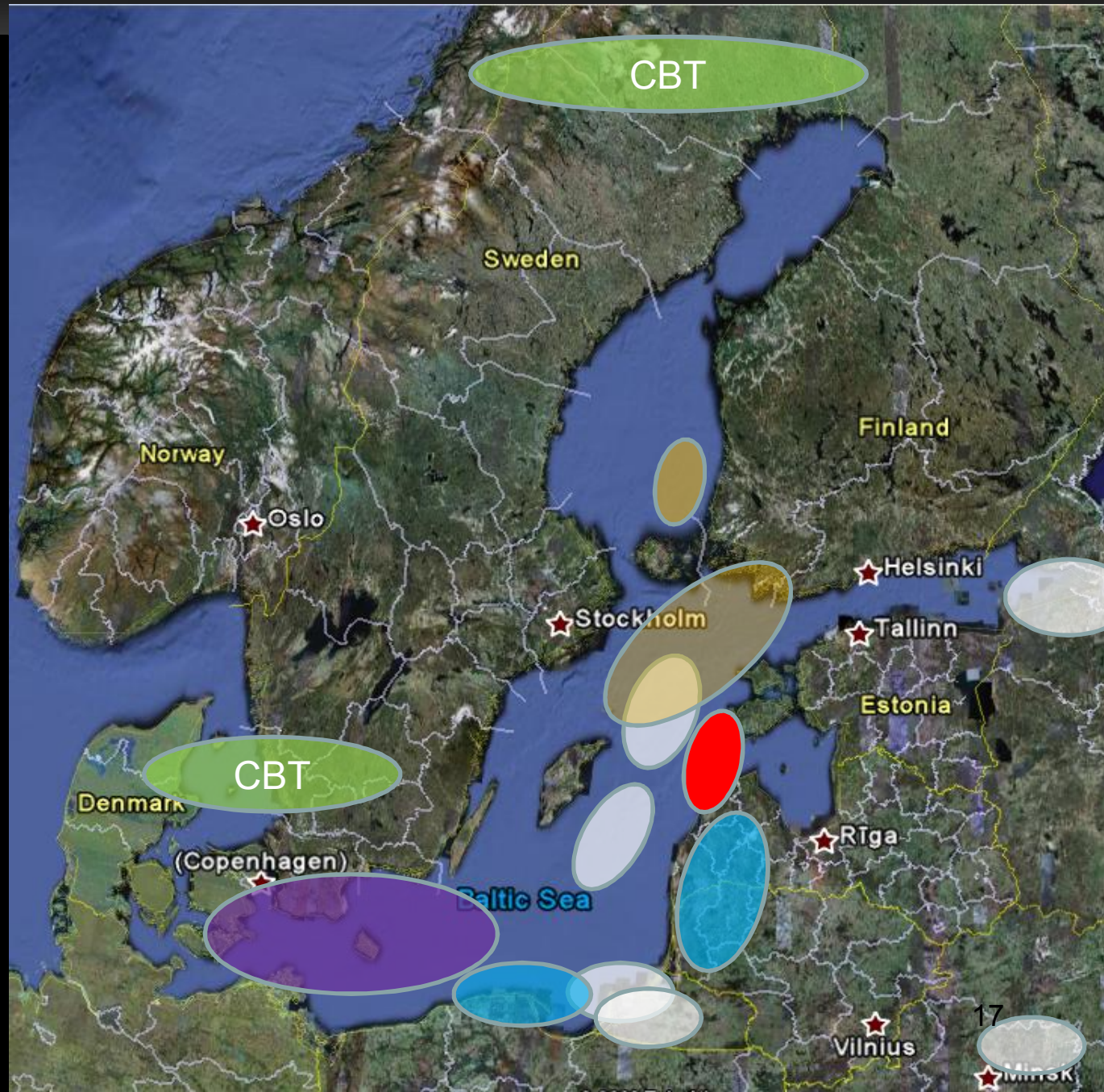


**Wind power & Oil &
Cables & Pipelines &
Dumping areas &
Exercise areas &
Former mined areas**



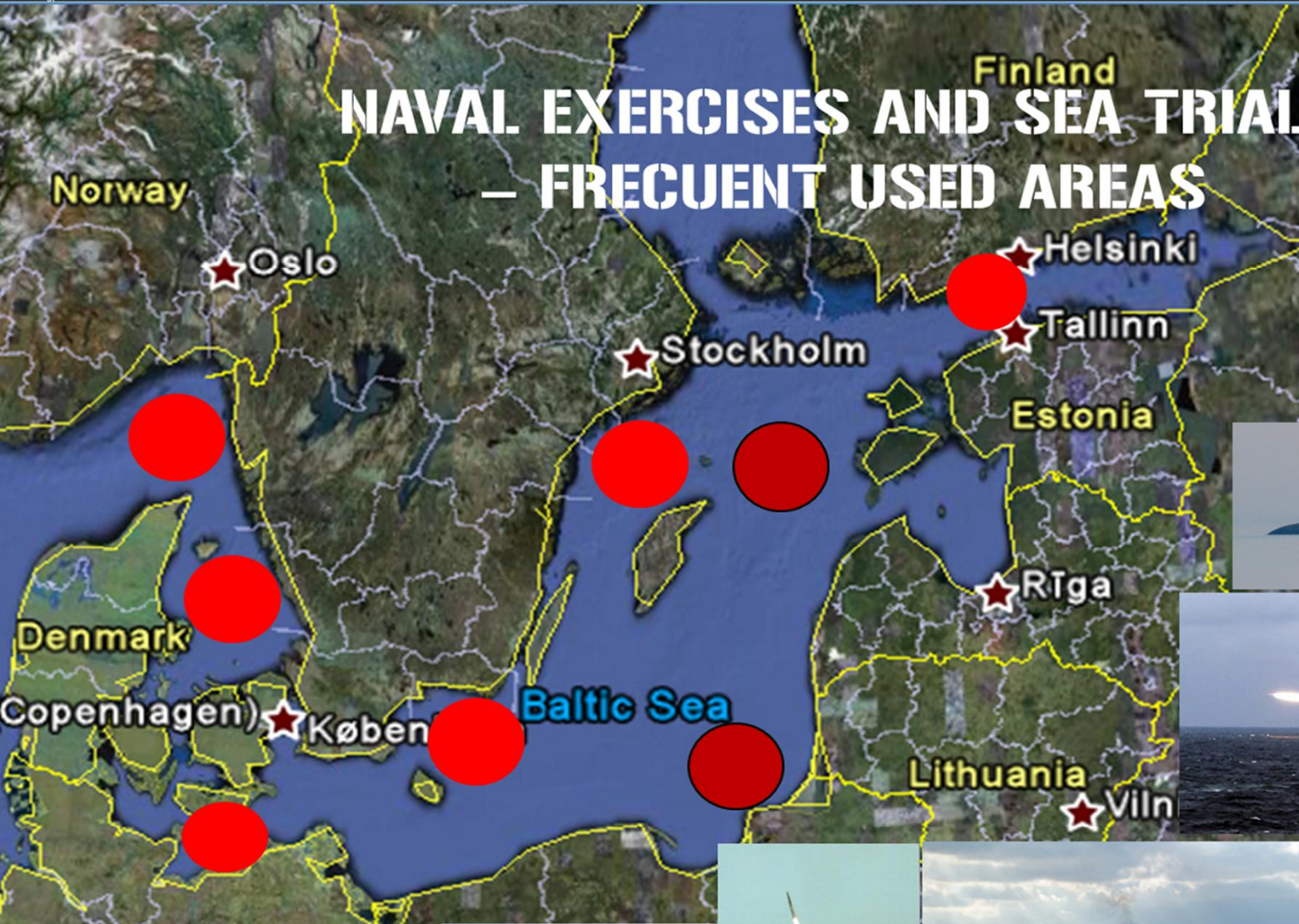


- Northern Coasts.
- RU ZAPAD
- Steadfast Jazz (Nato)
- Arctic Challenge (Air Force CBT).
- Open Spirit.
- BALTOPS



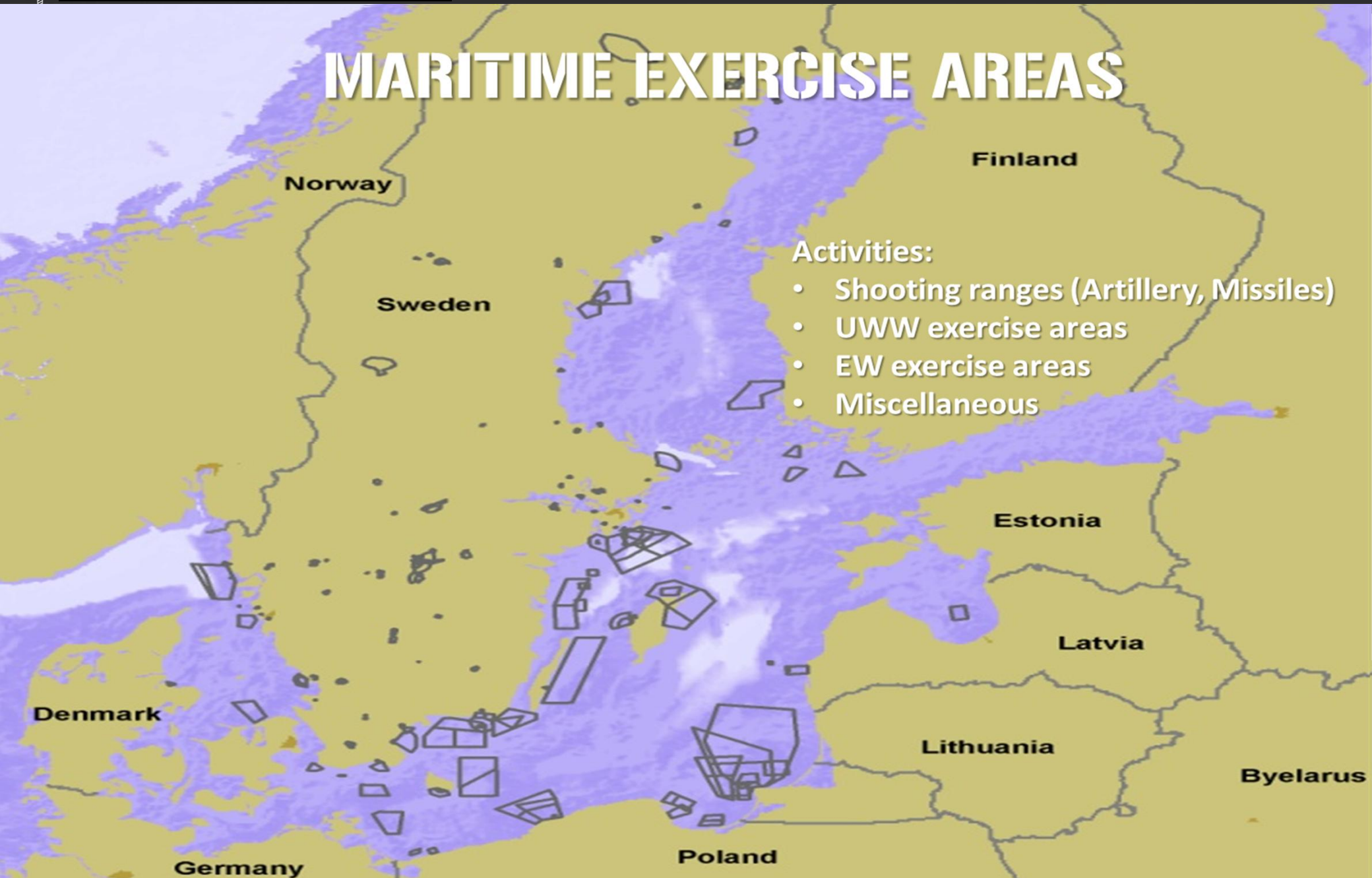


NAVAL EXERCISES AND SEA TRIALS – FREQUENT USED AREAS





MARITIME EXERCISE AREAS

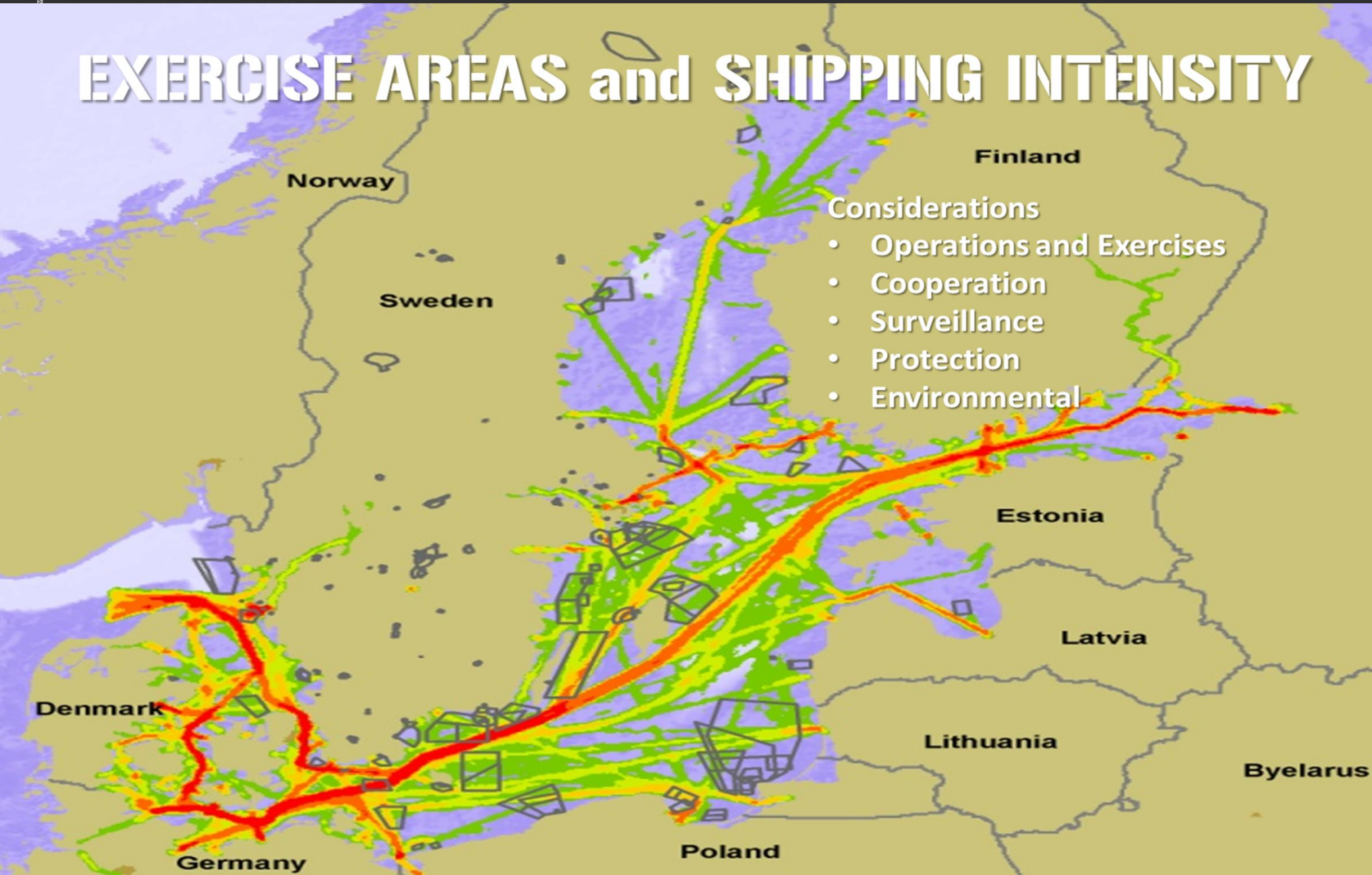


Activities:

- Shooting ranges (Artillery, Missiles)
- UWW exercise areas
- EW exercise areas
- Miscellaneous

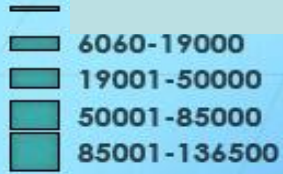


EXERCISE AREAS and SHIPPING INTENSITY





Trends & developments in the Baltic region



Arctic domain's increasing importance

The US focus on Asia and the Pacific area

Increased level of training and exercises in the area

The extensive and non coordinated reductions in military budgets in Europe

Increasing maritime cooperation.

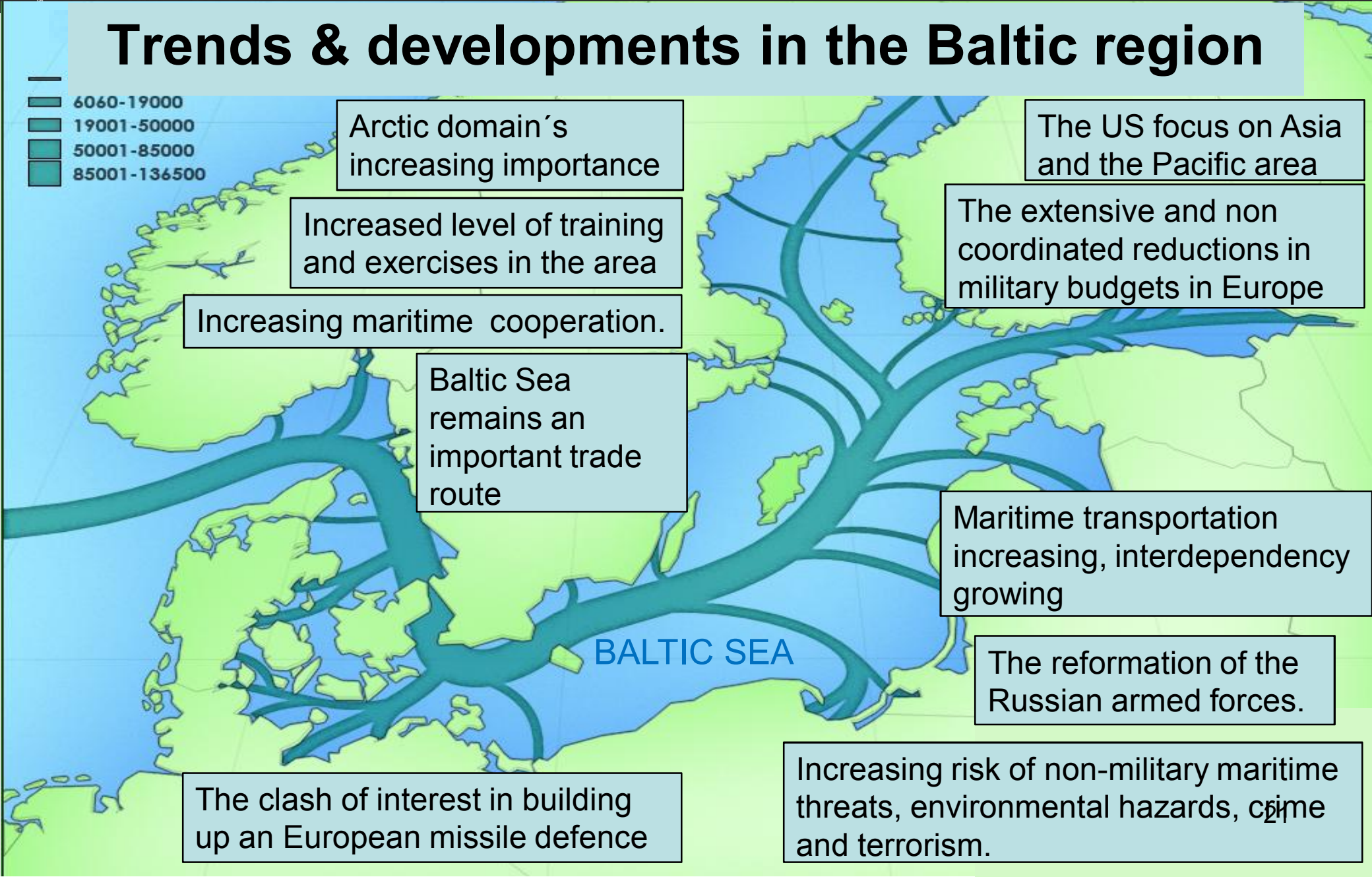
Baltic Sea remains an important trade route

Maritime transportation increasing, interdependency growing

The reformation of the Russian armed forces.

The clash of interest in building up an European missile defence

Increasing risk of non-military maritime threats, environmental hazards, crime and terrorism.





THE BALTIC SEA AND ADJACENT WATERS

A MARITIME THEATRE OF GREAT IMPORTANCE

The Littorals

- **Complex environment**
 - Easy to hide and difficult to detect.
- **Short reaction times**
- **Limited Space**
 - Short distances and lack of space to defend in depth and to manoeuvre.
- **Broad spectra of threats and force**
 - Anti Ship Missiles, Mines, Torpedoes, Artillery, Ground based Aircraft and Helos, Combat Divers, Small Units and Underwater systems optimised for shallow waters.
- **Non-military actors in great numbers**
 - Ferries, merchant ships, fishing and pleasure boats, civilian aircrafts.



Maritime situational awareness and littoral operational capacity

– A JOINT EFFORT





BUT ALSO A COMBINED EFFORT!

Building trust and confidence by increased interagency and international cooperation will help us to create a secure and safe environment the Baltic Sea



**Thank you for your attention
and warm welcome to
Stockholm!**

